



# **Printer Driver Installation Manual**

## **Copyrights**

Any unauthorized reproduction of the contents of this document, in part or whole, is strictly prohibited.

## **Limitation of Liability**

SATO Corporation and its subsidiaries in Japan, the U.S. and other countries make no representations or warranties of any kind regarding this material, including, but not limited to, implied warranties of merchantability and fitness for a particular purpose. SATO Corporation shall not be held responsible for errors contained herein or any omissions from this material or for any damages, whether direct, indirect, incidental or consequential, in connection with the furnishing, distribution, performance or use of this material.

Specifications and contents in this document are subject to change without notice.

Be sure to perform a virus check for the USB memory or SD card before connecting it to the printer. SATO Corporation shall not be held responsible for a malfunction of the printer caused by a virus infection through the USB memory or SD card.

## **Trademarks**

SATO is a registered trademark of SATO Holdings Corporation and its subsidiaries in Japan, the U.S. and other countries.

Secure Digital (SD) Card is a registered trademark of the SD Card Association.

QR Code is a registered trademark of DENSO WAVE INCORPORATED.

Bluetooth is a trademark of Bluetooth SIG, Inc., U.S.A.

All other trademarks are the property of their respective owners.

**Version: GBS-Printer Driver-r05-07-02-17IM**

**© 2017 SATO Corporation. All rights reserved.**

# Table of Contents

<b>Table of Contents .....</b>	<b>1</b>
<b>1 Purpose of this Manual.....</b>	<b>3</b>
<b>2 Printer Driver Installation.....</b>	<b>5</b>
<b>2.1 SATO Printer Driver Installation using PrnInst .....</b>	<b>5</b>
2.1.1 Local Port Installation Steps .....	7
2.1.2 Network Port Installation Steps .....	10
2.1.3 USB Port Installation Steps .....	15
2.1.4 Other Port Installation Steps.....	17
2.1.5 Printer Options.....	19
2.1.6 Installation Process .....	20
<b>2.2 PrnInst Based Driver Installation using Remote Desktop.....</b>	<b>21</b>
<b>2.3 Printer Driver Installation using Windows Installer .....</b>	<b>22</b>
2.3.1 Plug and Play Driver Setup .....	22
2.3.2 Printer Driver Available on Windows Update Site – Automatic Installation .....	23
2.3.3 Printer Driver Unavailable on Windows Update Site – Manual Installation .....	23
2.3.4 Preinstalling the Printer Drivers .....	24
<b>2.4 Additional Installation Options .....</b>	<b>25</b>
2.4.1 SATO Advanced Port Monitoring .....	25

<b>3 Uninstalling a Printer Driver.....</b>	<b>29</b>
3.1 Uninstalling SATO Driver using PrnInst .....	29
3.2 Simultaneous Removal of Preloaded Printer Drivers using PrnInst.....	31
3.3 Uninstalling a Driver using Command Line Parameters .....	32
3.4 Uninstalling a Printer Driver using Windows Administrative Tools.....	33
3.5 Removing Drivers from Windows Driver Store .....	34
<b>4 Printer Driver Update .....</b>	<b>37</b>
4.1 Selecting the Drivers .....	37
4.2 Updating the Printer Drivers using PrnInst .....	37
<b>5 Import and Export Driver Settings Using Command Line Utility .....</b>	<b>41</b>
<b>6 Troubleshooting.....</b>	<b>43</b>
6.1 Locked Printer Driver.....	43
6.2 Possible Printer Driver Update Issues .....	45
<b>7 Appendix: Command Line Parameters for PrnInst .....</b>	<b>47</b>
7.1 INSTPRN – Printer Driver Installation .....	47
7.2 INSTMULTPRN – Installation of Multiple Printers .....	47
7.3 LANG – Setting the PrnInst Language .....	48
7.4 UNINSTALL – Uninstall Printer .....	50
7.5 UNINSTALLPRN – Uninstall specific Printer .....	50
7.6 UNINSTALLALL – Uninstall all Printers .....	50
7.7 NOLICENCE – No License Display .....	51
7.8 NOCERT – Do not force Driver Certification when installing a Driver .....	51
7.9 DIR – Change Start Browsing Path .....	51
7.10 PREINSTALL – Preinstall Driver Package .....	52
7.11 UNINSTALLPACKAGE – Uninstall Driver Package.....	52
7.12 INSTALLPORTMON – Silent Installation of Port Monitor .....	53

# 1

## **Purpose of this Manual**

The purpose of this installation manual is to successfully guide you through the process of printer driver installation.

This manual should be used in combination with printer installation and user manuals. Refer to the driver release notes for detailed information on the latest features, specifications, solved and known issues.

**This page is intentionally left blank.**

# 2

## Printer Driver Installation

There are two ways to install SATO printer drivers. We recommend using the **PrnInst** application. The application is controlled by the graphical user interface or command line interface. An alternative option is to use the **Windows Add** printer process.

Refer to the corresponding sections of this manual to successfully perform the driver installation. Before starting printer driver installation, make sure that you are logged in as an administrator.

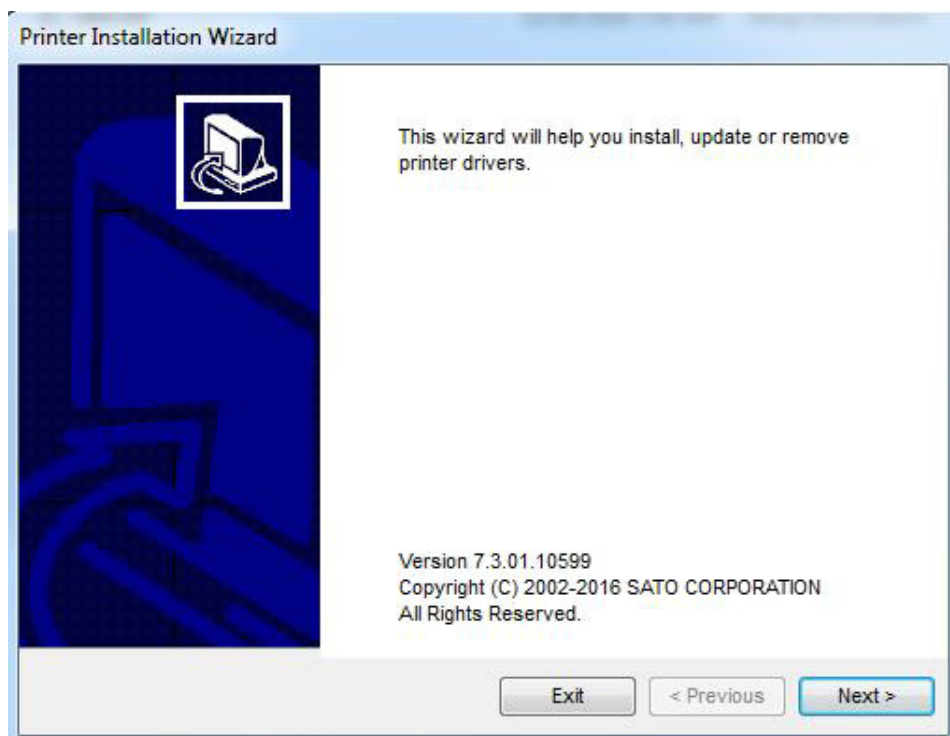
### 2.1 SATO Printer Driver Installation using PrnInst

**Printer Installation Wizard (PrnInst)** is a dedicated application for installing printer drivers on Windows based systems.

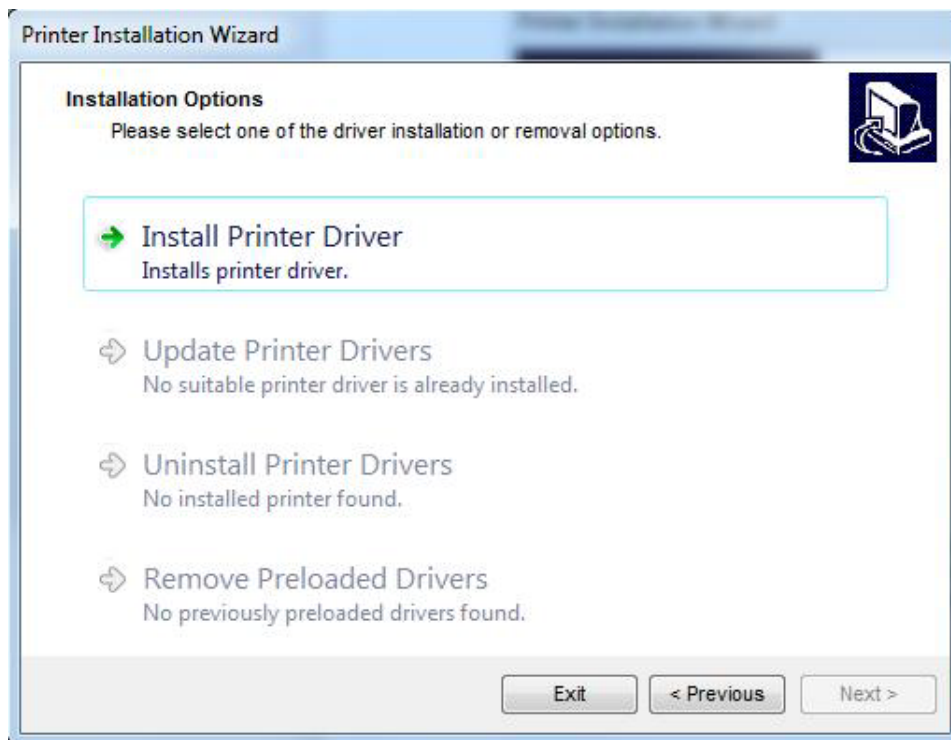
PrnInst based installation is available for the devices that are connected to LAN networks or any computer port. For printers that support plug and play installation procedure, refer to [Section 2.3.1 Plug and Play Driver Setup](#).

Download the correct printer driver to your local disk and run the downloaded self-extractable .exe file. PrnInst starts automatically. Follow the wizard steps described below to install the driver.

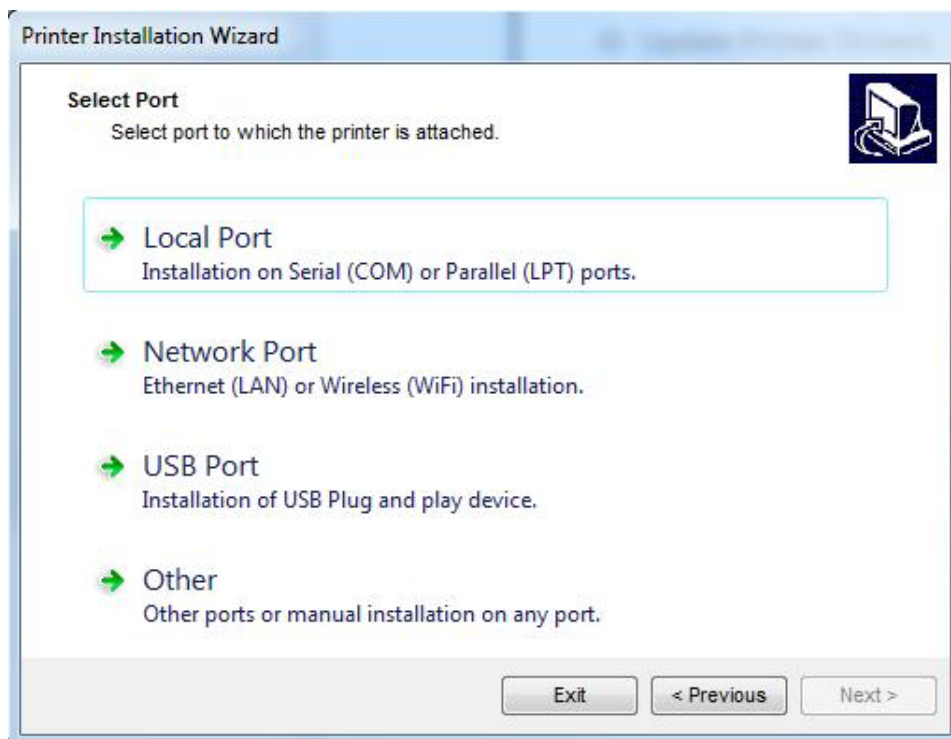
- 1** Unzip the installation files to a selected folder.
- 2** Run **PrnInst.exe**
- 3** A welcome screen appears. Click **Next**.



**4** Select **Install Printer Driver** and click **Next**.



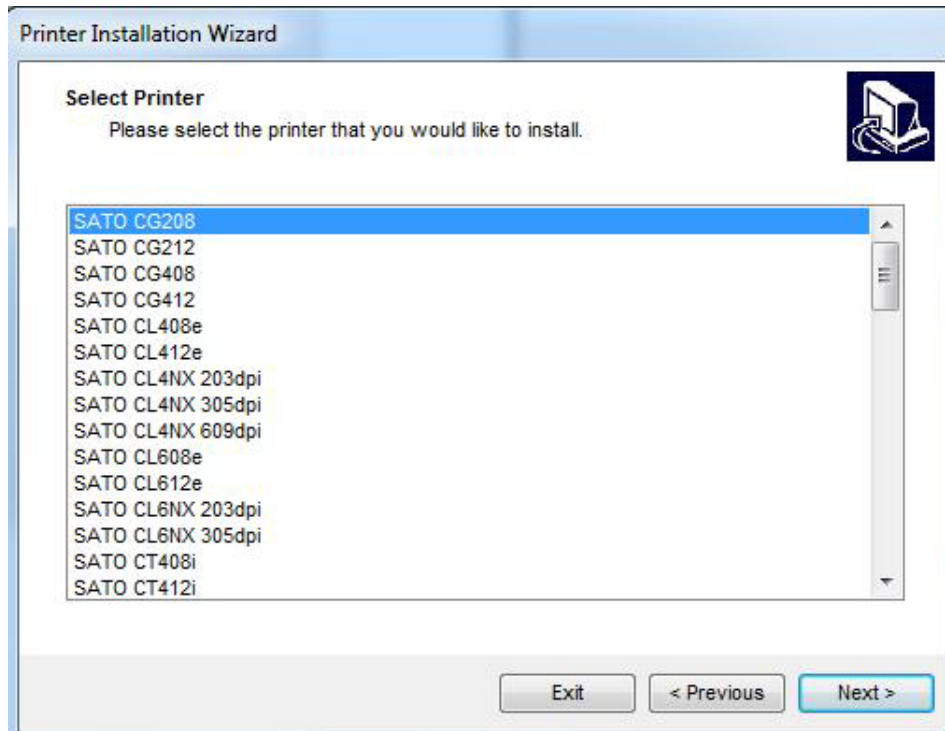
**5** Select the printer port and click **Next**.



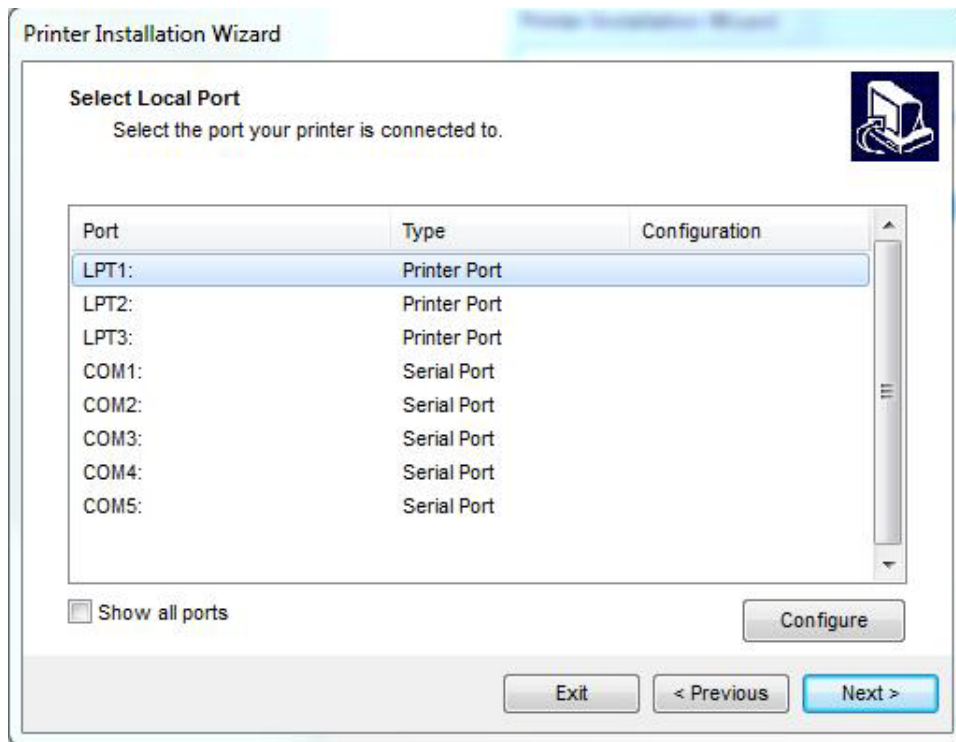
### 2.1.1 Local Port Installation Steps

After selecting local port printer connection option, follow the steps below.

- 1 Select the appropriate printer model.



- 2 Select the local port to which your printer is connected.



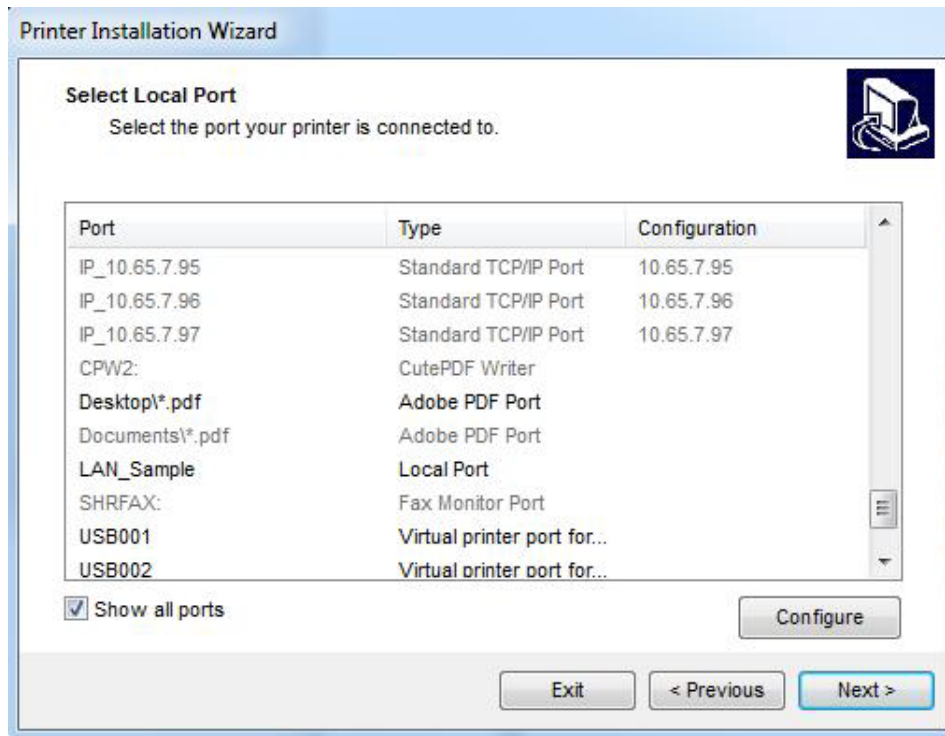
---

### Note

Port(s) which are already taken by other printers are grayed-out and cannot be selected.

---

Show all ports option displays all available ports on the system.



## Note

If the printer supports bidirectional communication, its driver automatically reports which ports are suitable for the printer to connect to.

To configure the currently selected local port, click **Configure**. System dialog opens allowing you to set the appropriate port-specific values.

Click **Next** to proceed to [Section 2.1.5 Printer Options](#).

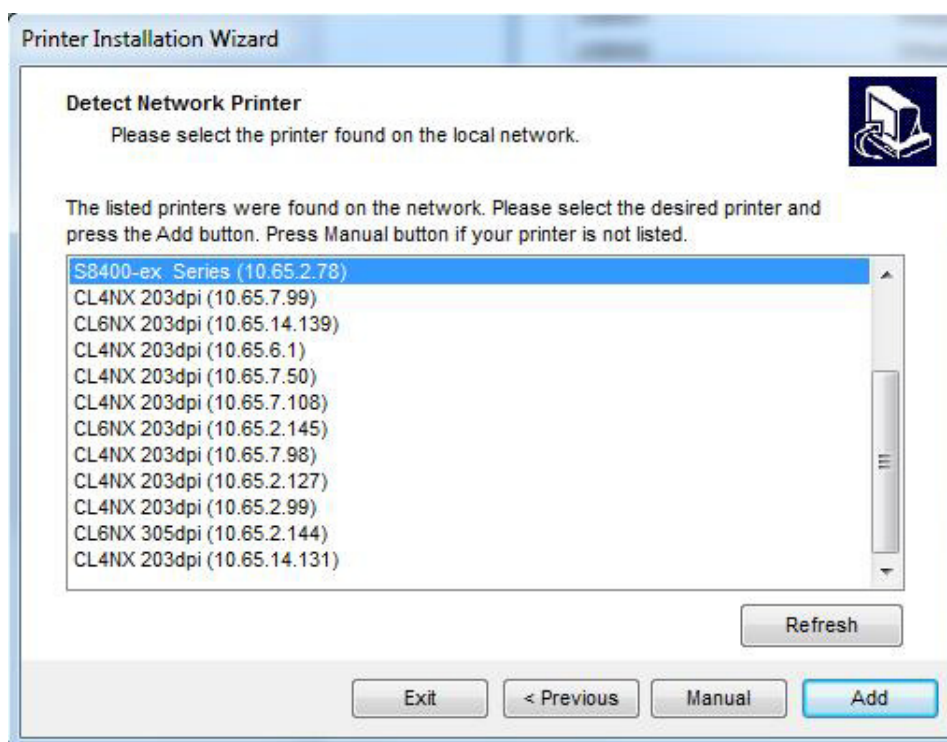
### 2.1.2 Network Port Installation Steps

After selecting the network port printer connection option, install one of the printers which are discovered on the network, or install it manually.

#### Network Port Installation Using Network Discovery

**Detect Network Printer** window appears immediately after starting the network port installation process.

- 1 Mark the detected network printer and click **Add**.



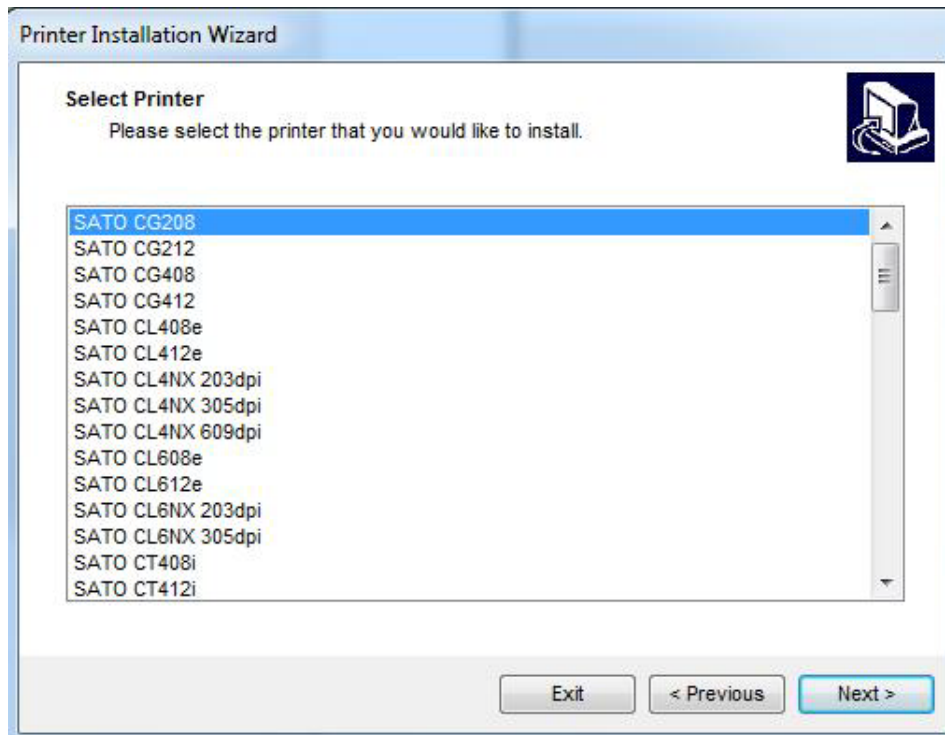
---

#### Note

For printers that identify themselves by their series (and not by the exact model), select from the listed series of printers. These series may include multiple printer models. The selection will direct you to [Section 2.1.5 Printer Options](#).

---

- 2** If specific models of the detected printer are listed, select the appropriate one and click **Next**.



- 3** You are directed to [Section 2.1.5 Printer Options](#).

---

**Note**

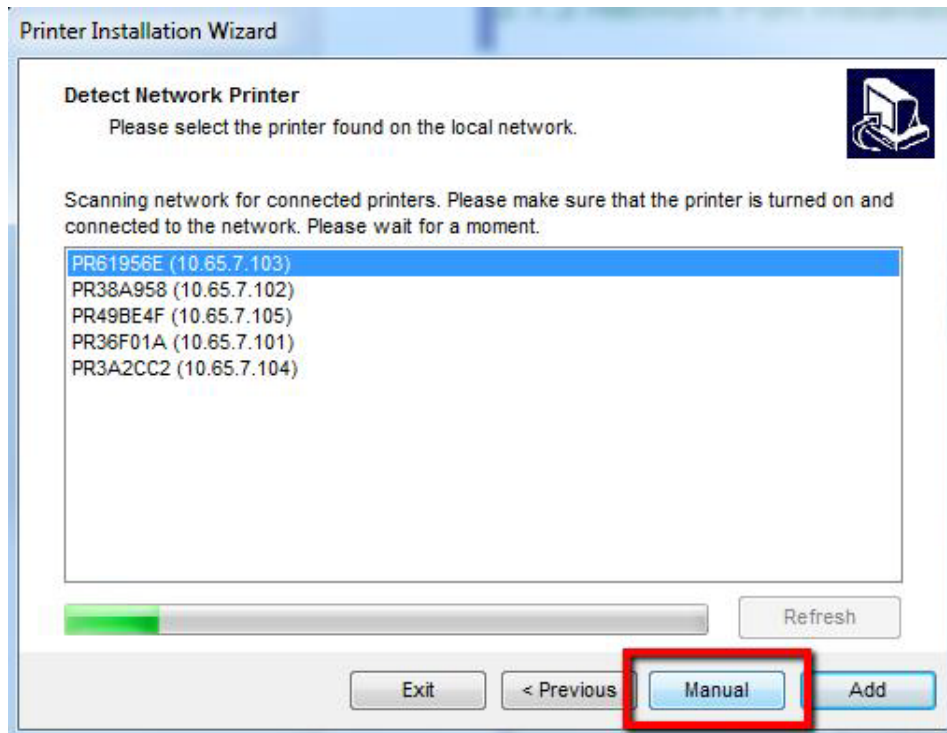
Network discovery is available if the printer model supports bidirectional communication.

---

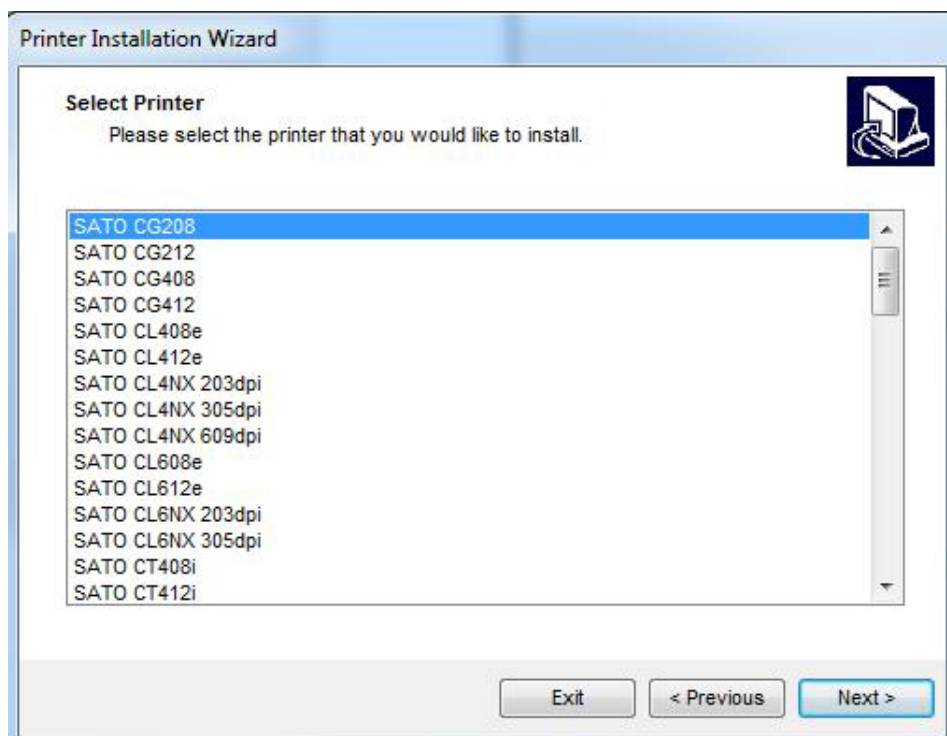
### Manual Network Port Installation

**Detect Network Printer** window appears immediately after starting the network port installation process.

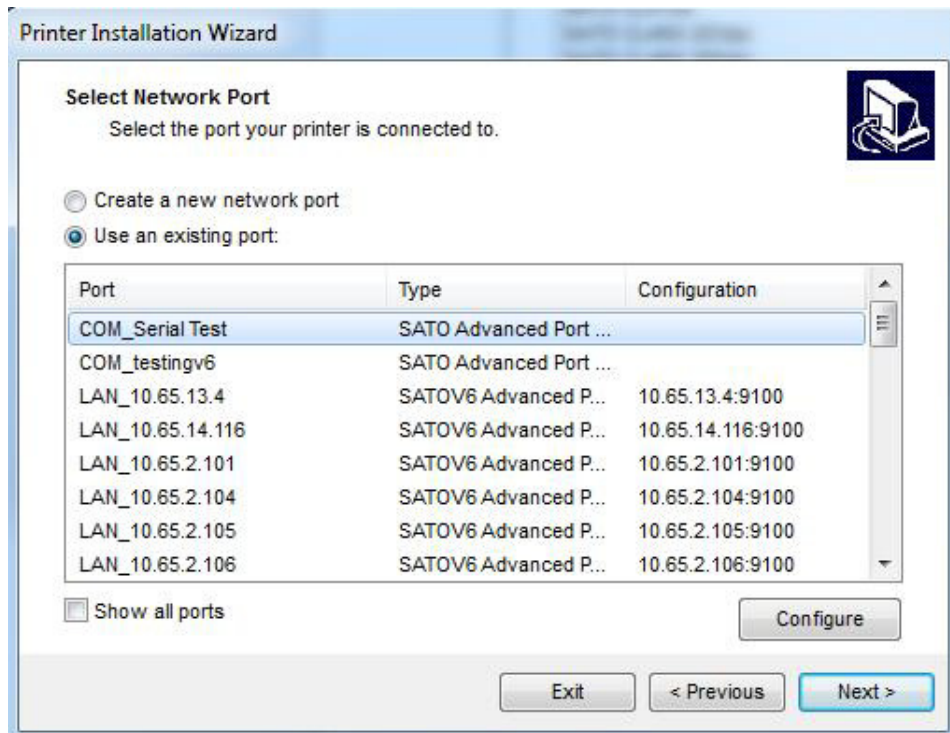
- 1 To start the manual network port printer driver installation, click **Manual**.



- 2 Select the appropriate printer model.

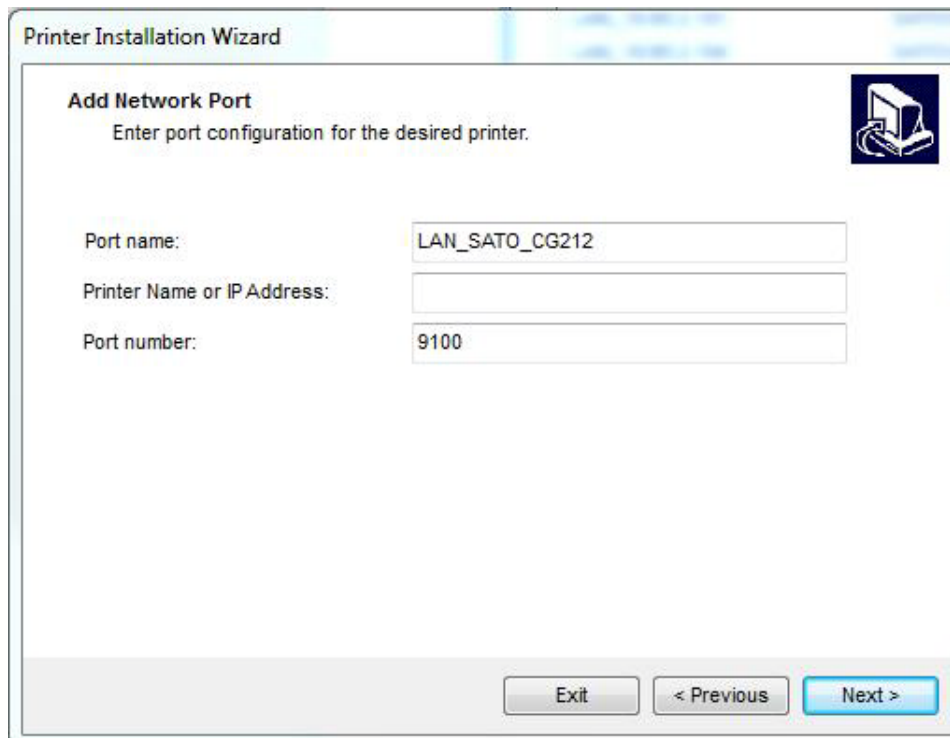


**3 Select Network Port** window allows you to select which network port should your printer be connected to.



### Create a new network port

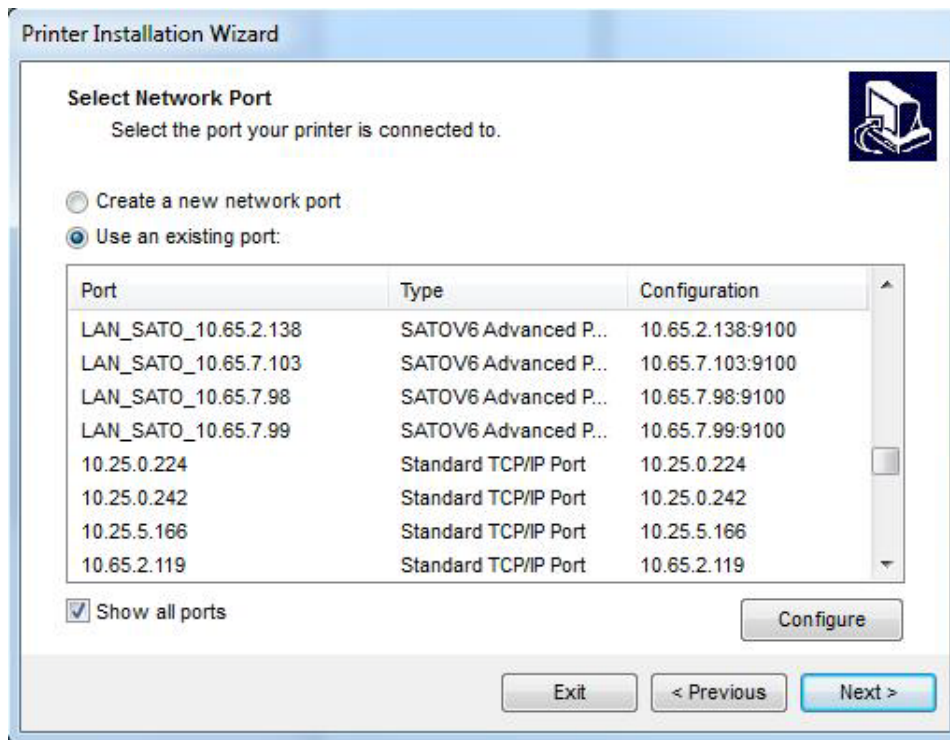
This option opens the **Add Network Port** window.



- **Port Name:** defines the name for the newly created network port.
- **Printer Name or IP Address:** defines which printer (its name or IP address) connects to the newly created network port.
- **Port Number:** the number of the newly created network port. PrnInst suggests the number automatically.

### Use an existing port

This option selects an automatically detected network port to connect the printer to.

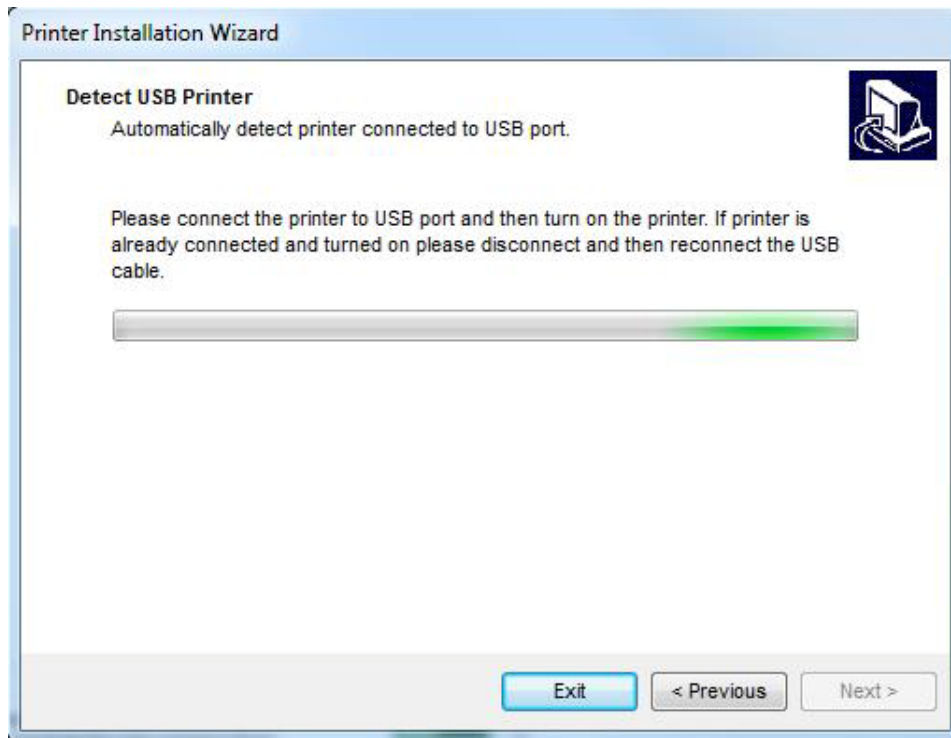


Enable **Show all ports** option to list all available (also non-network) ports.

Click **Next** to proceed to [Section 2.1.5 Printer Options](#).

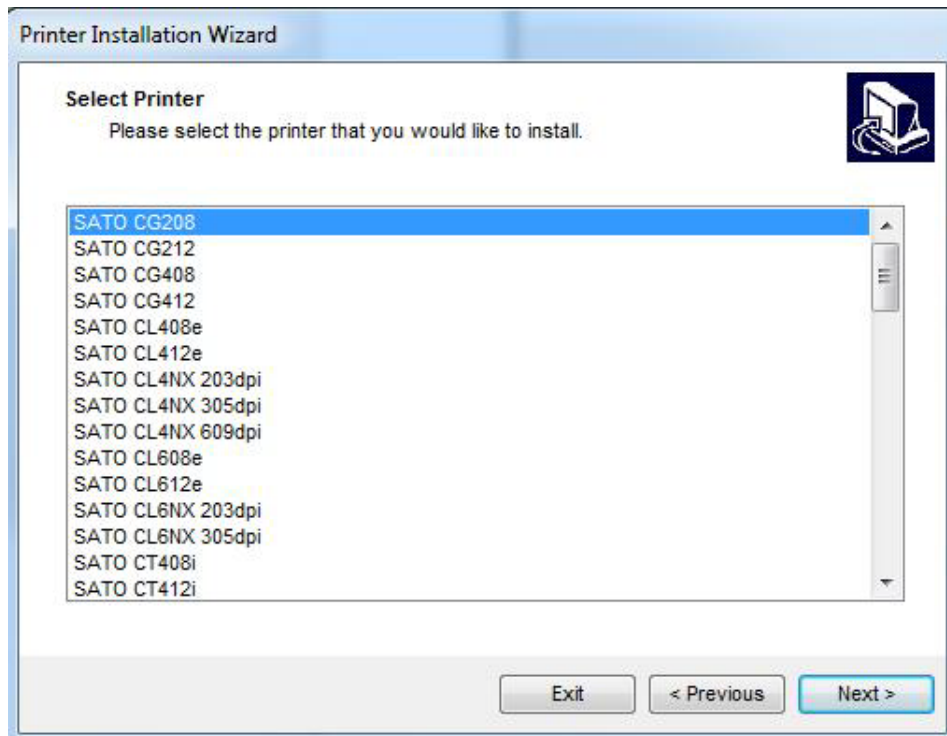
### 2.1.3 USB Port Installation Steps

When installing a USB printer, PrnInst automatically detects the connected printer using its Plug and Play ID.



- 1** Click **Next** after detecting the printer. PrnInst will take you to the final stage of printer driver installation process. [Section 2.1.5 Printer Options](#) window appears.
- 2** If the printer driver for the connected printer is already installed, PrnInst offers you to update it. Click **Next** to proceed to printer driver update.

If driver does not recognize the printer Plug and Play ID, the **Select Printer** window appears.

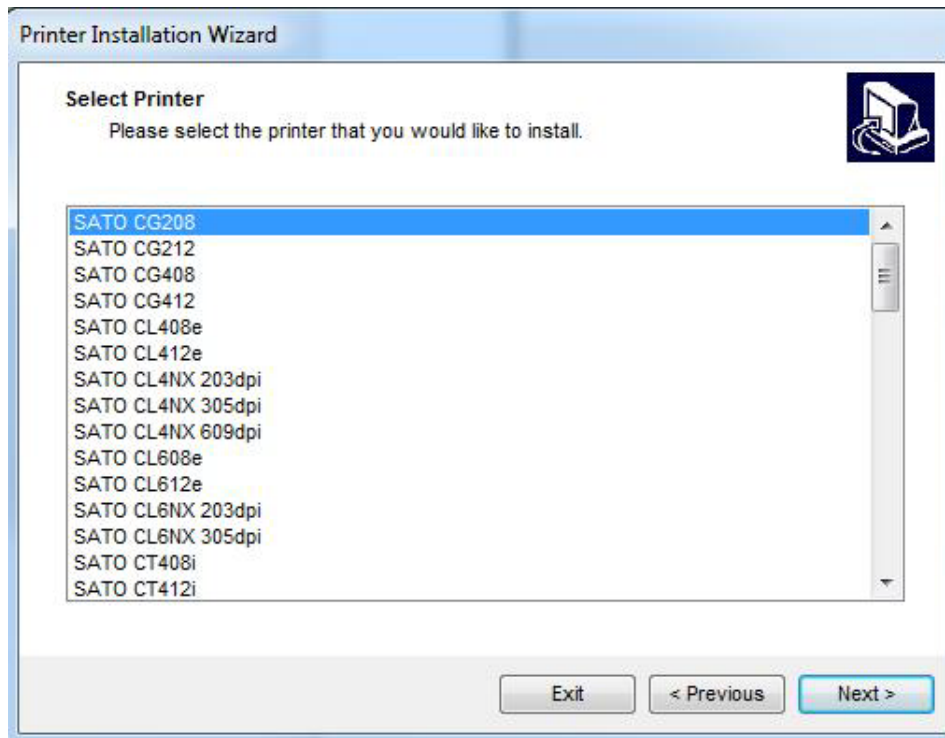


Click **Next** after selecting the printer model. PrnInst will take you to the final stage of printer driver installation process. [Section 2.1.5 Printer Options](#) window appears.

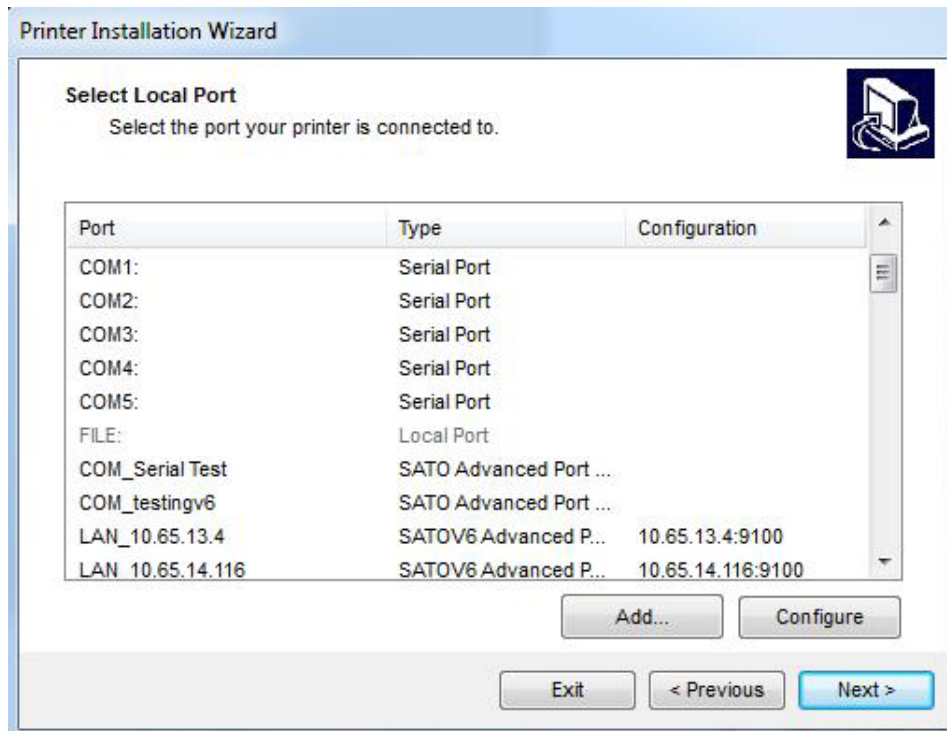
### 2.1.4 Other Port Installation Steps

**Other** allows you to connect the printer to a dedicated port or to connect it manually. After selecting the **Other** port connection option, follow the steps below.

- 1 Select the appropriate printer model.



- 2** Select the port for connecting the printer. The port can either be an existing or a newly added one.

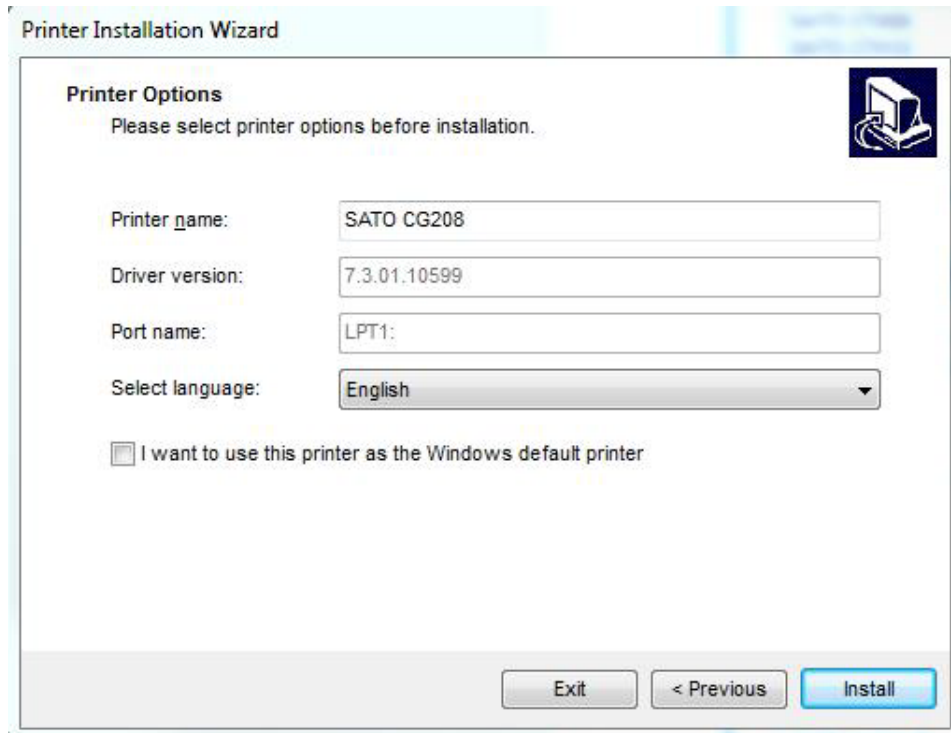


- **Add...:** creates a new port. Press the button to open **Advanced TCP/IP Port Configuration** window.
- **Configure:** allows you to configure the local port. Refer to [Section 2.1.1 Local Port Installation Steps](#) for details.

- 3** Click **Next** to proceed to [Section 2.1.5 Printer Options](#).

## 2.1.5 Printer Options

Printer Options window allows you to set printer identity parameters.



Printer Installation Wizard

**Printer Options**  
Please select printer options before installation.

Printer name: SATO CG208

Driver version: 7.3.01.10599

Port name: LPT1:

Select language: English

☐ I want to use this printer as the Windows default printer

Exit < Previous Install

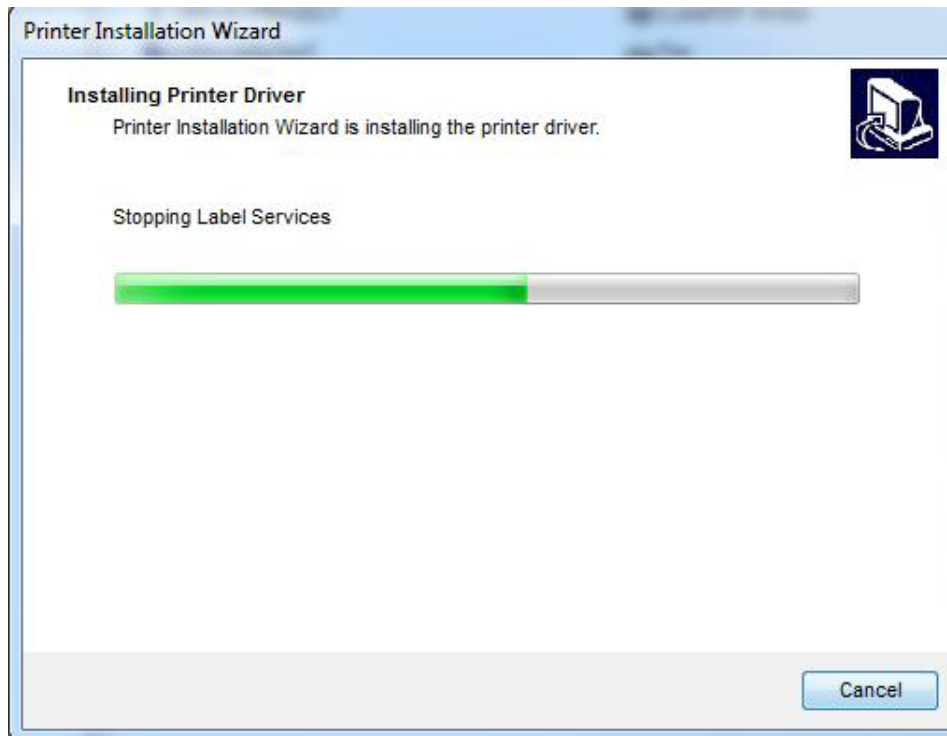
- **Printer name:** sets custom printer name to make it easily recognizable after the installation.
- **Driver version:** information about the current driver version.
- **Port name:** information about the currently used port.
- **Select language:** defines driver user interface language.

Enable **I want to use this printer as the Windows default printer** to set the current printer as the default system printer.

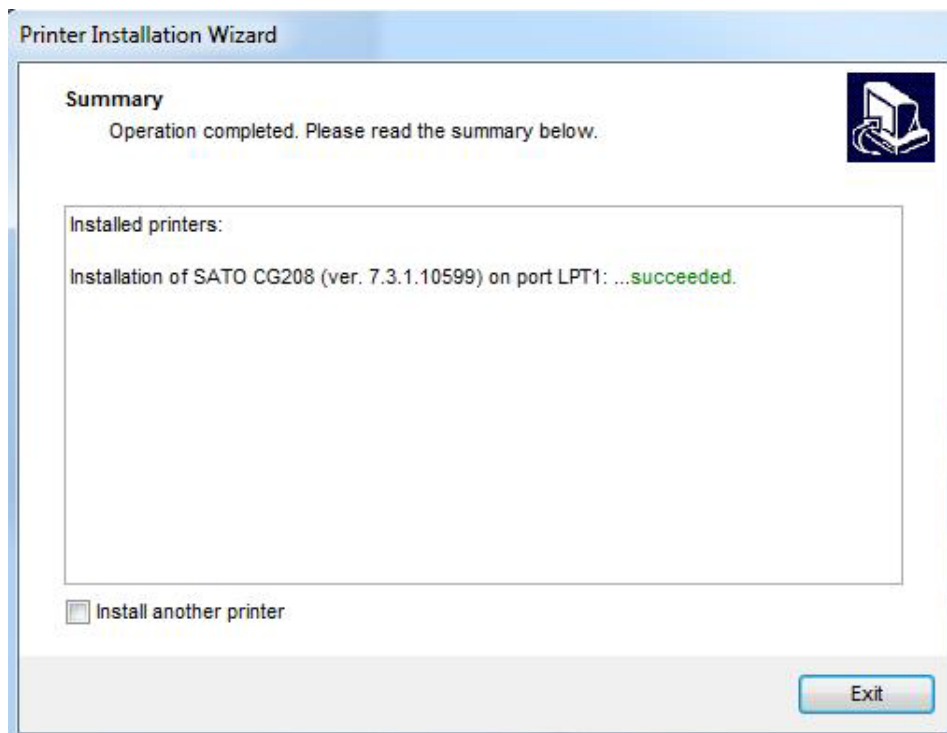
Click **Install** to initiate the printer driver installation process.

### 2.1.6 Installation Process

Printer driver installation window appears after clicking **Install**.



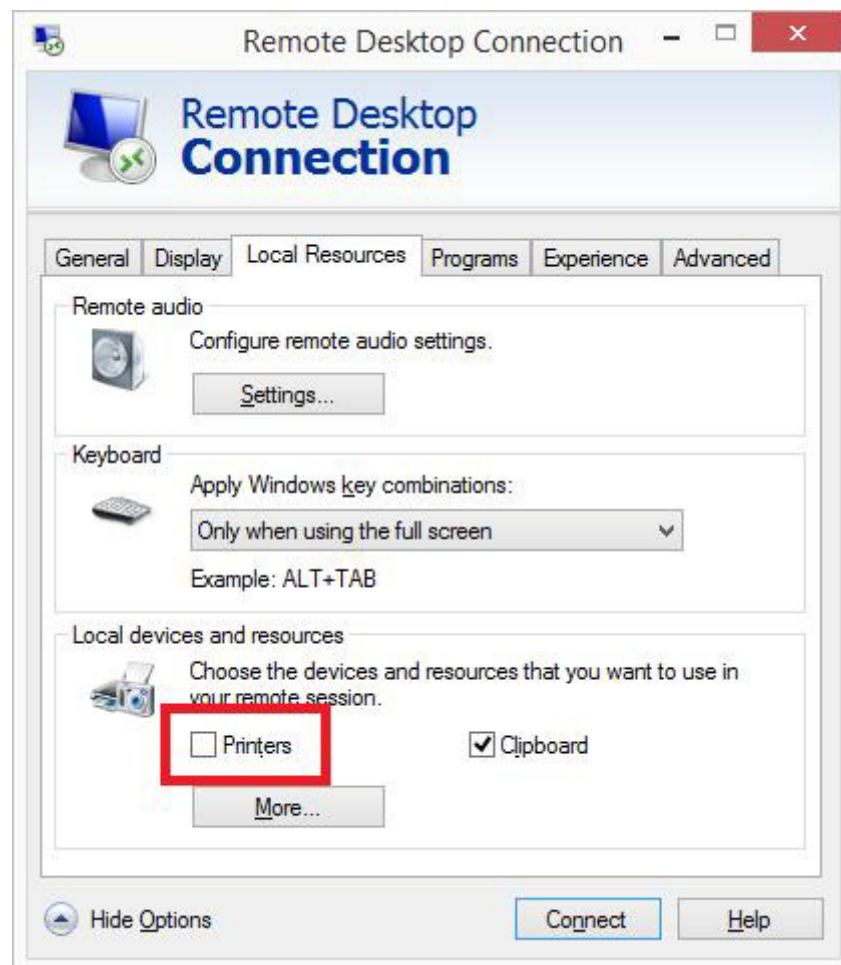
**Summary** window appears after a successful installation.



Enable **Install another printer** if you wish to continue installing additional printers.  
Click **Exit** to finish the installation.

## 2.2 PrnInst Based Driver Installation using Remote Desktop

Printer mapping must be disabled when installing a printer driver using the remote desktop. To disable it, deselect **Printers** option of the **Local Resources** tab in the **Remote Desktop Connection** window.



## 2.3 Printer Driver Installation using Windows Installer

Printer driver installation using Windows Installer is used on devices that are connected via one of the following ports:

- USB port
- Parallel port (LPT)

### 2.3.1 Plug and Play Driver Setup

During this procedure, Windows automatically detects the newly connected hardware using a plug and play event on both ports – USB and LPT.

Follow these steps to install a printer driver:

- 1** Connect the printer to a power outlet and turn it on.
- 2** Connect the printer to a computer using USB or LPT port.
- 3** The driver is located online and downloaded to the PC. Automatic installation starts immediately.
- 4** The installed printer is ready for printing.

---

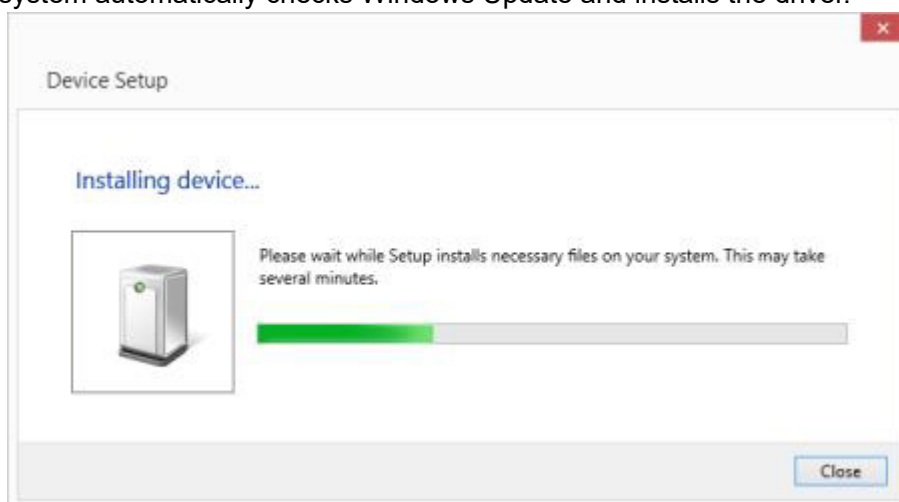
#### Note

Automatic printer detection is supported on USB and LPT ports only. The driver needs to be installed using PrnInst on other ports.

---

The **Add a printer** detection procedure differs between various operating systems. Follow the steps described below.

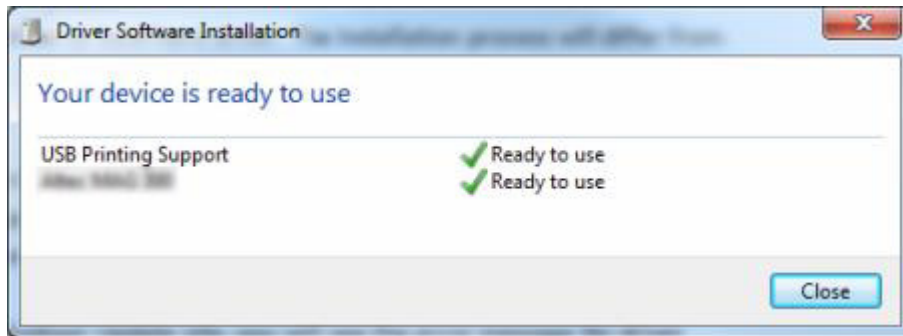
The operating system automatically checks Windows Update and installs the driver.



### 2.3.2 Printer Driver Available on Windows Update Site – Automatic Installation

The printer driver is automatically downloaded and installed.

On the latest operating systems (Windows 7 and later), a system notification message is shown. If you click the notification message, the new **Driver Software Installation** dialog box is shown. Monitor the installation status using this dialog box:



### 2.3.3 Printer Driver Unavailable on Windows Update Site – Manual Installation

If the printer driver is unavailable on the Windows Update site, download the printer driver to the local disk. Follow these steps to install a printer driver using the manual Windows **Add a printer** procedure.

- 1** Connect the printer to power outlet and turn it on.
- 2** Connect the printer to a computer.
- 3** Windows detects the printer.
- 4** Windows Update automatically checks for the printer driver online and fails. Start with manual installation.

The manual driver installation varies between various operating systems. Follow the steps described below.

- 1** Open **Control Panel** and click **Hardware and Sound -> Devices and Printers -> Device Manager**.
- 2** Expand node **Other devices**. The installed printer is listed here.
- 3** Right-click the printer and select **Update Driver Software**.
- 4** At the message **How do you want to search for driver software?**, select **Browse my computer for driver software**.

### 2.3.4 Preinstalling the Printer Drivers

Driver preinstallation option has two benefits:

- It speeds up the installation process – Windows Update is not contacted.
- It simplifies the USB printer installation when printer drivers are not available on the Windows Update site.

To preinstall a printer driver on Windows, use the PrnInst command line options.

Refer to chapter 6 [Appendix: Command Line Parameters for PrnInst](#). If new hardware is detected through plug and play event (on USB or parallel port), the operating system automatically installs the preinstalled printer driver. It does not query Windows Update for the driver.

#### Syntax

PrnInst.exe /PREINSTALL=<full path to INF file>

#### Sample

PrnInst.exe /PREINSTALL=C:\Drivers\SAMPLE\_DRIVER\SAMPLE\_DRIVER.inf

## 2.4 Additional Installation Options

### 2.4.1 SATO Advanced Port Monitoring

SATO Advanced Port Monitor installation is required to:

- Download graphics to the printer's internal memory.
- Download bitmaps to the printer's internal memory.
- Use bidirectional communication to check for the status of printers connected to the LAN port.

#### Installation

Follow these steps to install the **SATO Advanced Port Monitor**:

- Make sure that the printer is turned on and connected to:
  - The computer – if the serial port (COM) or parallel port (LPT) connections are in use.
  - The network – if a network (LAN) printer is in use.
- Follow [Section 2.1.2 Network Port Installation Steps](#) of the PrnInst installation wizard to install.
- A list of all detected network printers is shown.
- Select the printer on the list and click **Add**.

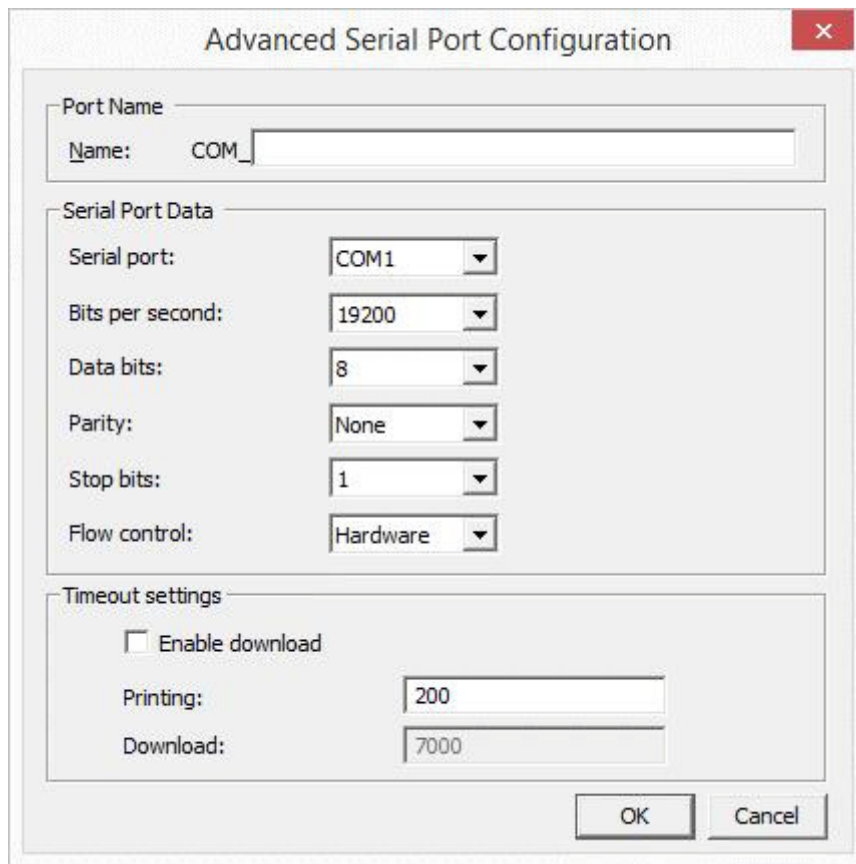
#### Note

If your printer has already been detected, click **Add** without waiting for the printer discovery to complete.

- If the printer is not connected using the network interface or if the network interface has not been detected, choose **Manual Network Port Installation**, select the appropriate port type. You can also click **Manual** while the printer discovery is still in progress in order to interrupt it. **Advanced Port Monitoring Configuration** window appears:



- Enter the port name and port-specific configuration for COM, TCP/IP or LPT port.



The 'Advanced Serial Port Configuration' dialog box is used to set up serial communication. It features three main sections: 'Port Name', 'Serial Port Data', and 'Timeout settings'. The 'Port Name' section has a text field for the name, currently showing 'COM\_'. The 'Serial Port Data' section contains several dropdown menus for 'Serial port' (set to 'COM1'), 'Bits per second' (set to '19200'), 'Data bits' (set to '8'), 'Parity' (set to 'None'), 'Stop bits' (set to '1'), and 'Flow control' (set to 'Hardware'). The 'Timeout settings' section includes an unchecked checkbox for 'Enable download', and two text input fields for 'Printing' (set to '200') and 'Download' (set to '7000'). 'OK' and 'Cancel' buttons are located at the bottom right.

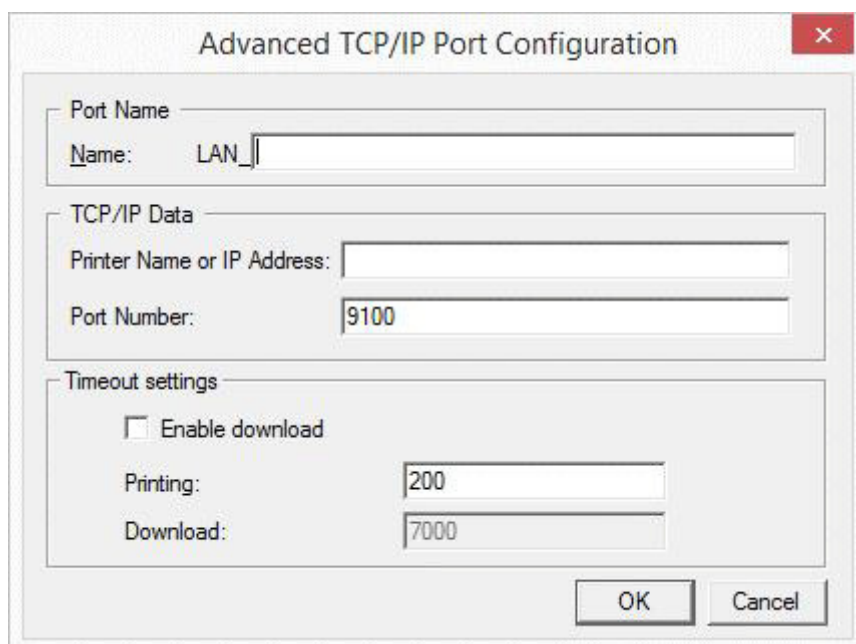
Advanced Serial Port Configuration

Port Name  
Name: COM\_

Serial Port Data  
Serial port: COM1  
Bits per second: 19200  
Data bits: 8  
Parity: None  
Stop bits: 1  
Flow control: Hardware

Timeout settings  
☐ Enable download  
Printing: 200  
Download: 7000

OK Cancel



The 'Advanced TCP/IP Port Configuration' dialog box is used to set up network communication. It features three main sections: 'Port Name', 'TCP/IP Data', and 'Timeout settings'. The 'Port Name' section has a text field for the name, currently showing 'LAN\_'. The 'TCP/IP Data' section contains two text input fields: 'Printer Name or IP Address' and 'Port Number' (set to '9100'). The 'Timeout settings' section includes an unchecked checkbox for 'Enable download', and two text input fields for 'Printing' (set to '200') and 'Download' (set to '7000'). 'OK' and 'Cancel' buttons are located at the bottom right.

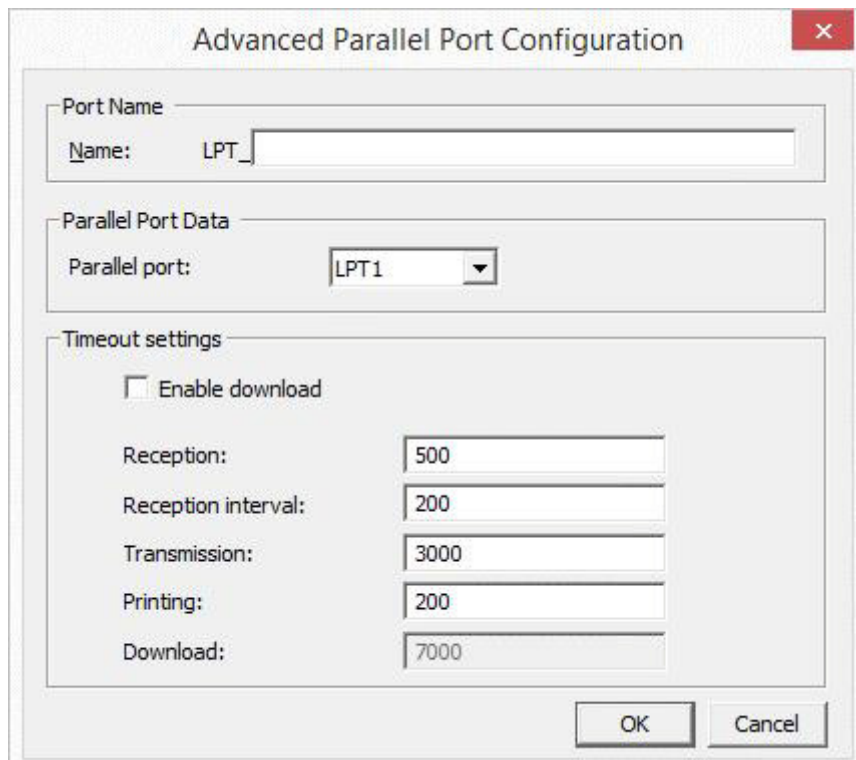
Advanced TCP/IP Port Configuration

Port Name  
Name: LAN\_

TCP/IP Data  
Printer Name or IP Address:  
Port Number: 9100

Timeout settings  
☐ Enable download  
Printing: 200  
Download: 7000

OK Cancel



The image shows a Windows-style dialog box titled "Advanced Parallel Port Configuration". It has a standard Windows window frame with a title bar and a close button (X) in the top right corner. The dialog is divided into three sections: "Port Name", "Parallel Port Data", and "Timeout settings".

- Port Name:** A text box labeled "Name:" with the text "LPT\_" followed by an empty input field.
- Parallel Port Data:** A section containing a "Parallel port:" label and a dropdown menu currently showing "LPT1".
- Timeout settings:** A section containing a checkbox labeled "Enable download" which is currently unchecked. Below this are five rows of settings, each with a label and a text box:
  - Reception: 500
  - Reception interval: 200
  - Transmission: 3000
  - Printing: 200
  - Download: 7000

At the bottom right of the dialog are two buttons: "OK" and "Cancel".

During the download procedure, the **Enable download** checkbox should be selected. This option sets port timeout values to the values that are appropriate for downloading.

---

### Note

This option has an impact on the printer performance. Do not select the **Enable download** setting during usual printing.

---

**This page is intentionally left blank.**

# 3

## Uninstalling a Printer Driver

Same as driver installation, there are two ways to uninstall SATO printer drivers. The standard method is to use the Pnlnst through graphical user interface or command line. Another option is to use the **Windows Administrative Tools**.

Make sure that you are logged in as a user with sufficient rights for uninstalling the printer driver.

When removing a printer driver, make sure that:

- The printer is not set as a default printer.
- There are no print jobs waiting in the print queue.
- The printer is not locked by the Windows Spooler process.

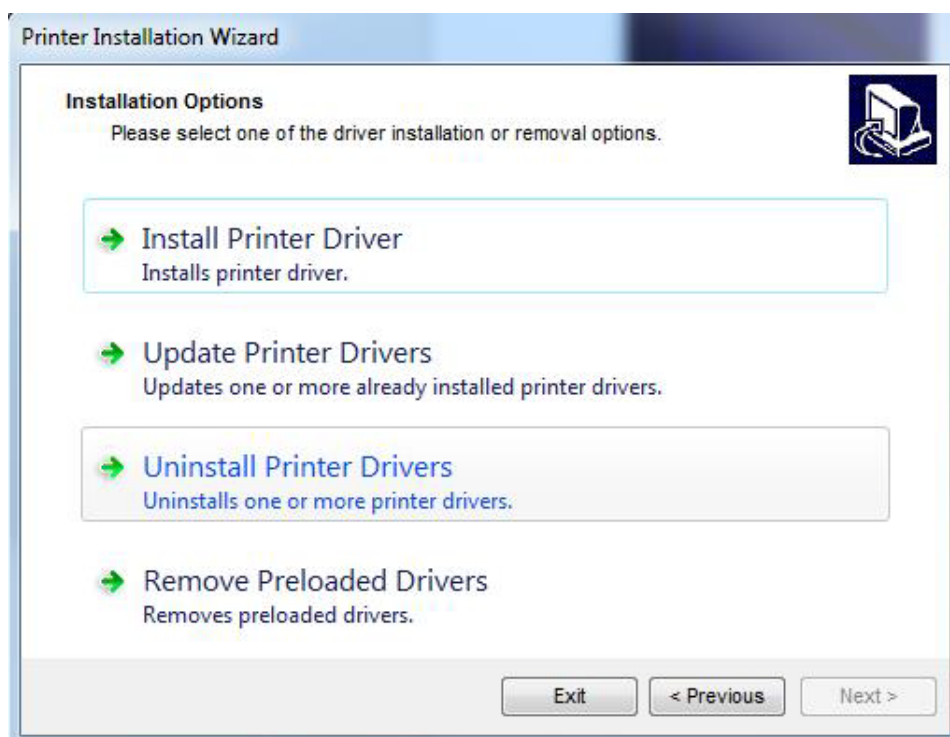
If you are unable to delete the printer driver, perform one of the following actions:

- Restart the Windows Spooler.
- Delete print jobs from the Windows Spooler.
- Restart the computer when required in certain cases.

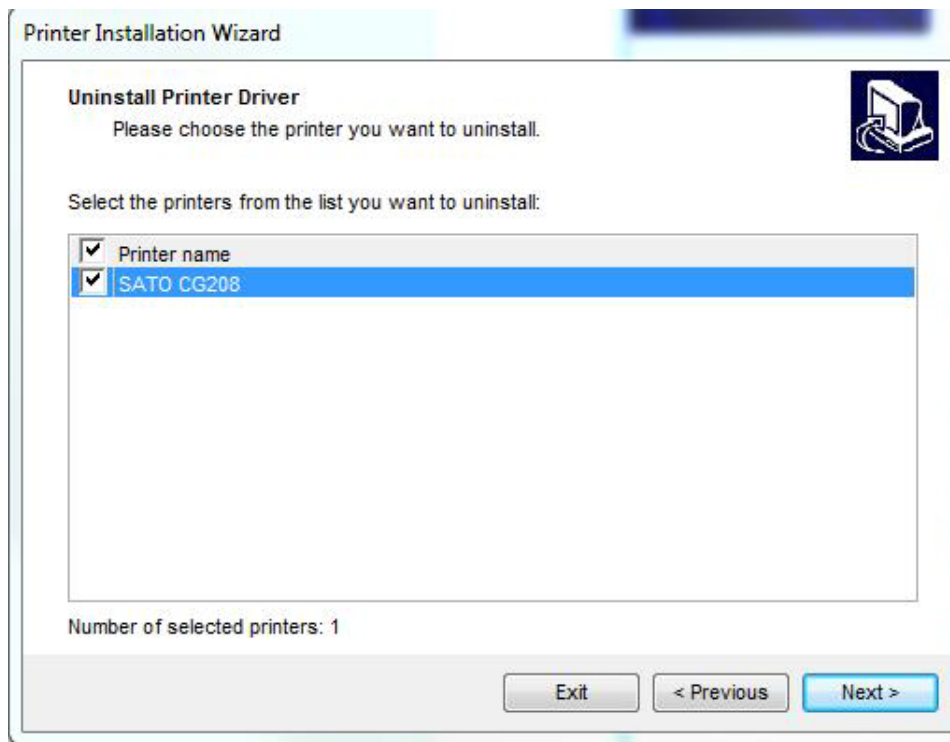
### 3.1 Uninstalling SATO Driver using Pnlnst

To uninstall a printer driver using the Pnlnst, follow these steps:

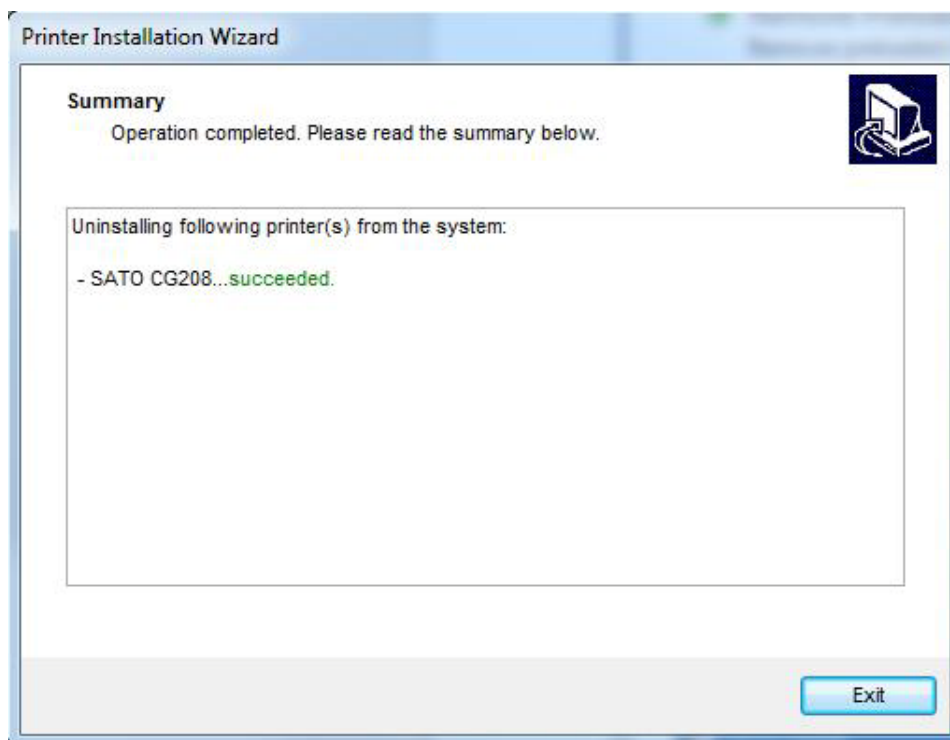
- 1 Start Pnlnst and click **Next**.
- 2 Select **Uninstall Printer Drivers** and click **Next**.



**3** Select the printer driver to be removed and click **Next**.



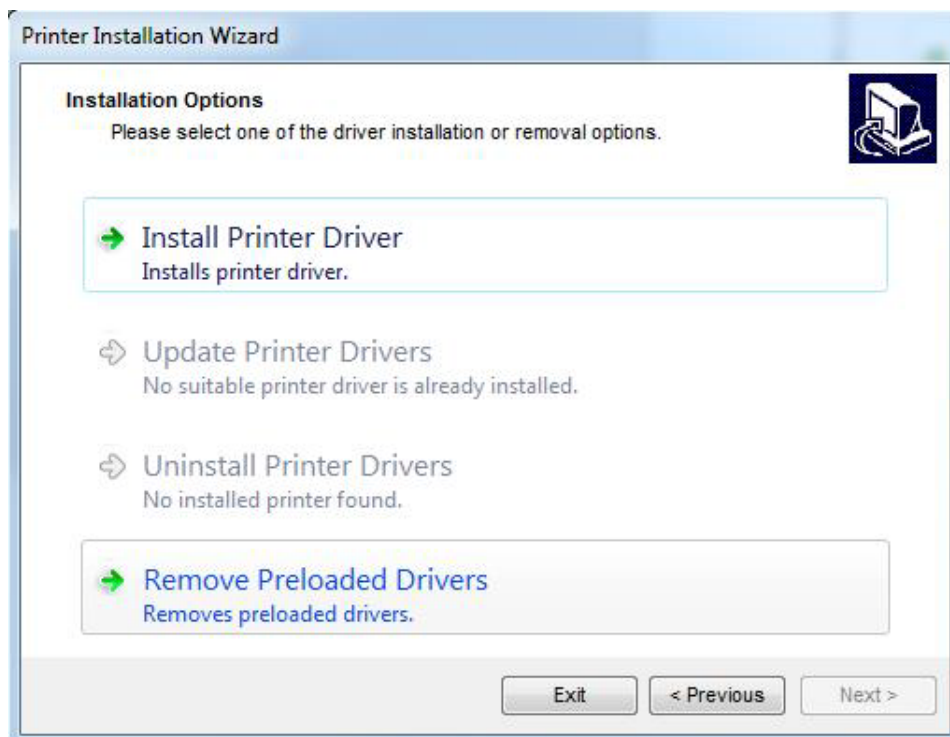
**4** Successful printer removal is confirmed.



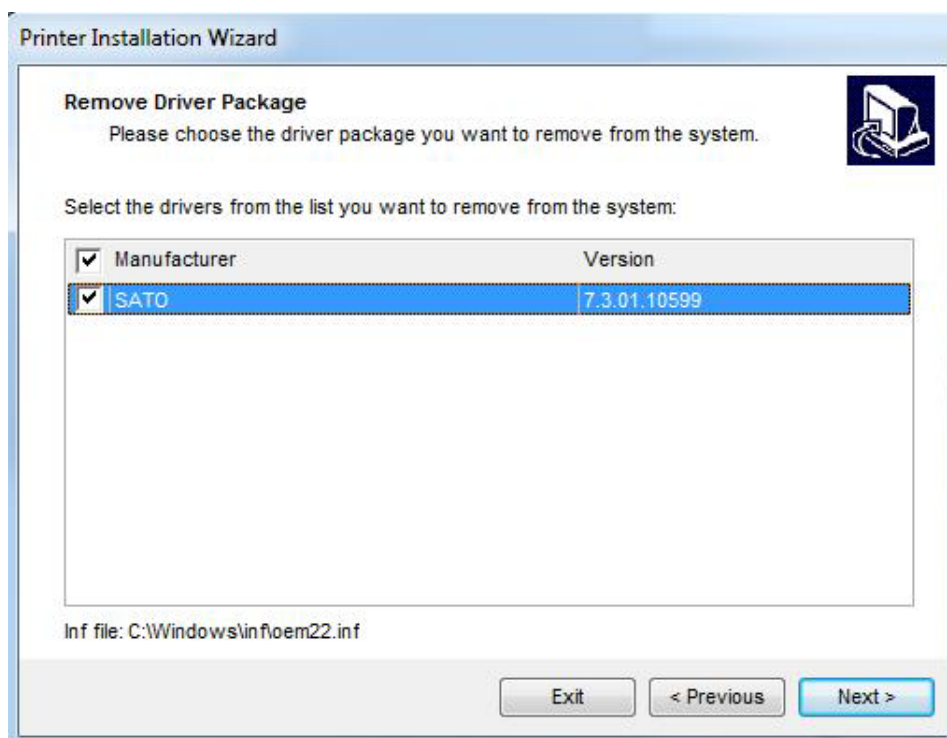
## 3.2 Simultaneous Removal of Preloaded Printer Drivers using PrnInst

Follow these steps to remove the preloaded printer drivers using PrnInst.

- 1 Start PrnInst and click **Next**.
- 2 Select **Remove Preloaded Drivers** and click **Next**.



### 3 Select all the printers from the list and click **Next**.



---

#### Note

The **Remove Preloaded Drivers** option only removes the driver installation files from the system. To uninstall a driver, select **Uninstall Printer Drivers** in step 2.

---

---

## 3.3 Uninstalling a Driver using Command Line Parameters

Use the command line parameters to remove the printer drivers without interacting with GUI. Control the PrnInst with command scripts as defined in the following section. Provide the printer name in the command line parameter UNINSTALLPRN.

#### Syntax

/UNINSTALLPRN=<printer name>

#### Sample

PrnInst.exe "/UNINSTALLPRN=SATO"

## 3.4 Uninstalling a Printer Driver using Windows Administrative Tools

Follow this procedure to delete a printer and to remove a printer driver from the system. Choose the procedure that is compatible with your operating system.

---

### Note

For advanced users only. We recommend using PrnInst to uninstall the drivers.

---

- 1** To open the **Print Management** console, click **Control Panel -> System and Security -> Administrative Tools** and double-click **Print Management**.
- 2** Expand **Print Servers** - <computer name> node.
- 3** Select **Printers** node.
- 4** Delete the printer.
- 5** Select **Drivers** node.
- 6** To delete a driver, select it and run **Action -> Remove Driver Package**.

---

### Note

Print Management console is not available by default. Refer to the console instructions to activate it.

---

## 3.5 Removing Drivers from Windows Driver Store

To completely remove all printer files from Windows driver store, follow the procedure described in this section.

- 1 Uninstall the printer driver. Refer to [Uninstalling a Printer Driver on page 29](#).

---

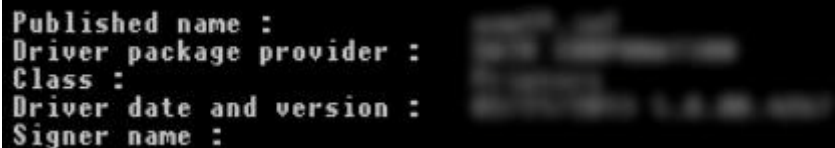
### Note

When deleting the printer from your computer, this procedure only removes the printer as a device. Driver files still exist on the disk. When you connect the printer next time, Windows installs the stored printer driver that was previously used.

To verify which drivers are stored in the system, perform the following:

- a. Open **Command Prompt** as an administrator.
- b. Enter the following command: `pnputil.exe -e`

- 2 A list of all INF files for the installed drivers appears. They are named as `oem<number>.inf`. Here is an example:



```
Published name :  
Driver package provider :  
Class :  
Driver date and version :  
Signer name :
```

- 3 When searching for the appropriate INF file, check for:
  - Driver package provider.
  - Driver date and version.

**To delete a driver package, follow this procedure:**

- 1** Open **Command Prompt** as administrator.
  - a. Open **All programs** → **Accessories** Start menu group.
  - b. Right-click **Command Prompt**.
  - c. Select **Run as administrator** in the menu.
- 2** Run the following command to list all INF files: `pnputil.exe -e`
- 3** Find INF package to be removed (check Driver package provider, Driver date and Version to identify the correct package).
- 4** Delete package using the following command: `pnputil.exe -f -d oem<number>.inf`  
Replace <number> parameter with the number that is identified in step 2.

The utility deletes the INF file:

```
C:\Windows\system32>pnputil.exe -f -d oem19.inf
Microsoft PnP Utility

Driver package deleted successfully.
C:\Windows\system32>_
```

**This page is intentionally left blank.**

# 4

## Printer Driver Update

### 4.1 Selecting the Drivers

Most printer driver distributions contain printer drivers for several printers. In a single printer driver distribution, there are certain driver files that are shared among different printers.

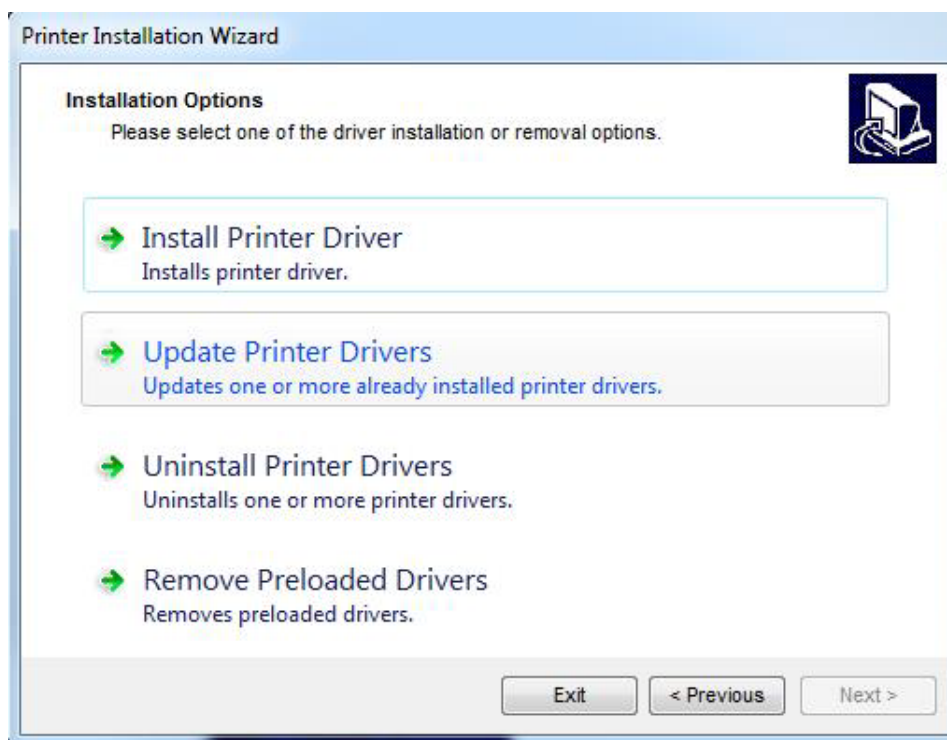
#### Note

If you have installed several drivers from the same printer driver distribution, the drivers for all these printers are going to be updated if you update a single driver.

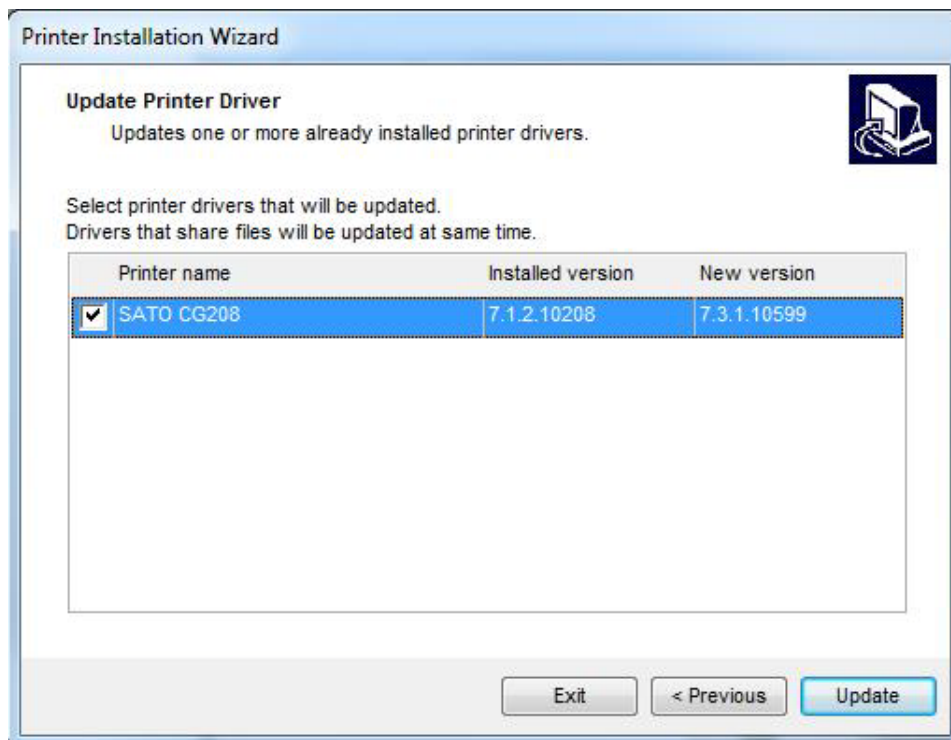
### 4.2 Updating the Printer Drivers using PrnInst

To update an existing printer driver, run PrnInst application for that specific printer.

- 1 Start PrnInst and click **Next**.
- 2 Select **Update Printer Drivers** and click **Next**.



### 3 Select a printer to update its driver.



### 4 Compare **Installed version** column with **New version** column for details about the version upgrade.

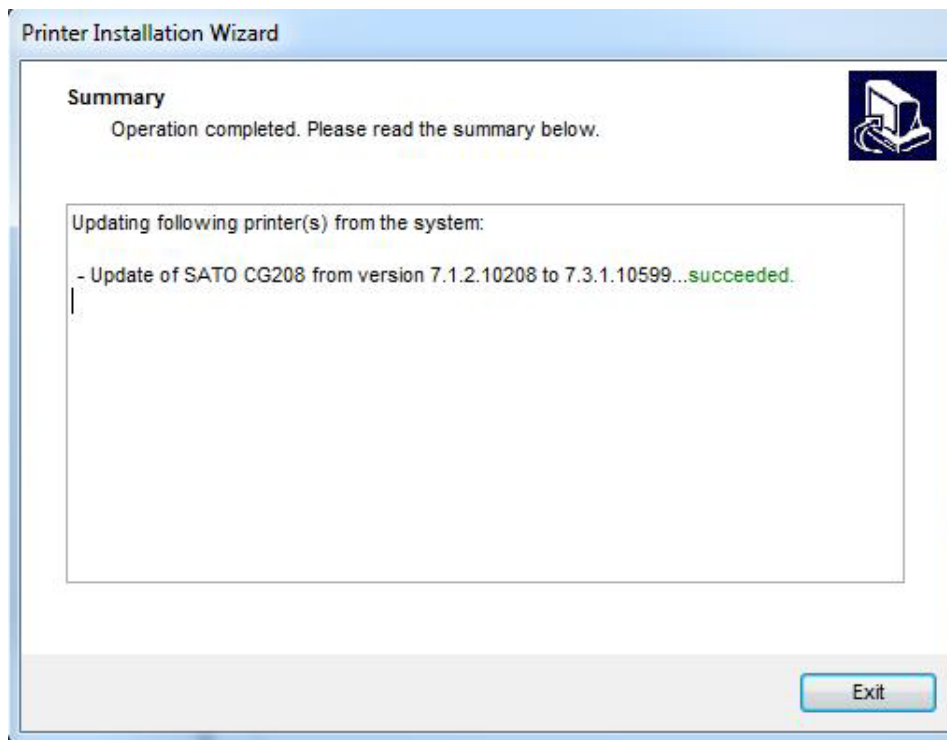
---

#### Note

- If printer drivers of the same multiple printer models share the same driver files, these printers are selected and upgraded simultaneously.
  - Grayed-out printers are currently missing and cannot be updated.
- 

### 5 Click **Update**.

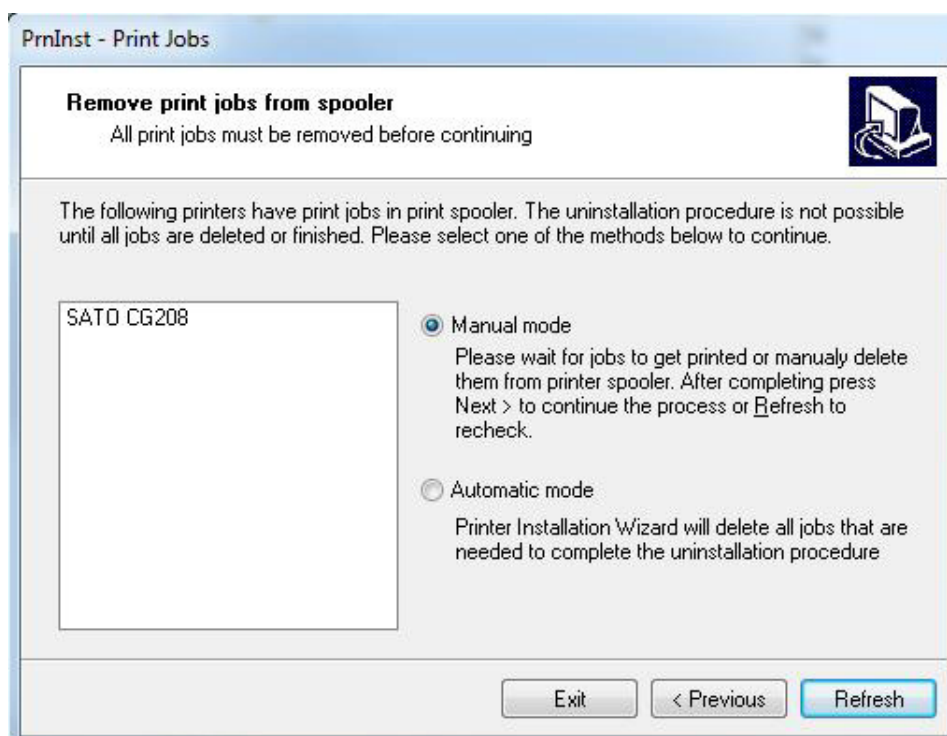
## 6 Summary window appears after a successful driver update.



## 7 Click **Exit** to close PrnInst.

### Update with Print Jobs In Spooler

With print jobs waiting in the Windows Spooler, PrnInst shows the following notification:

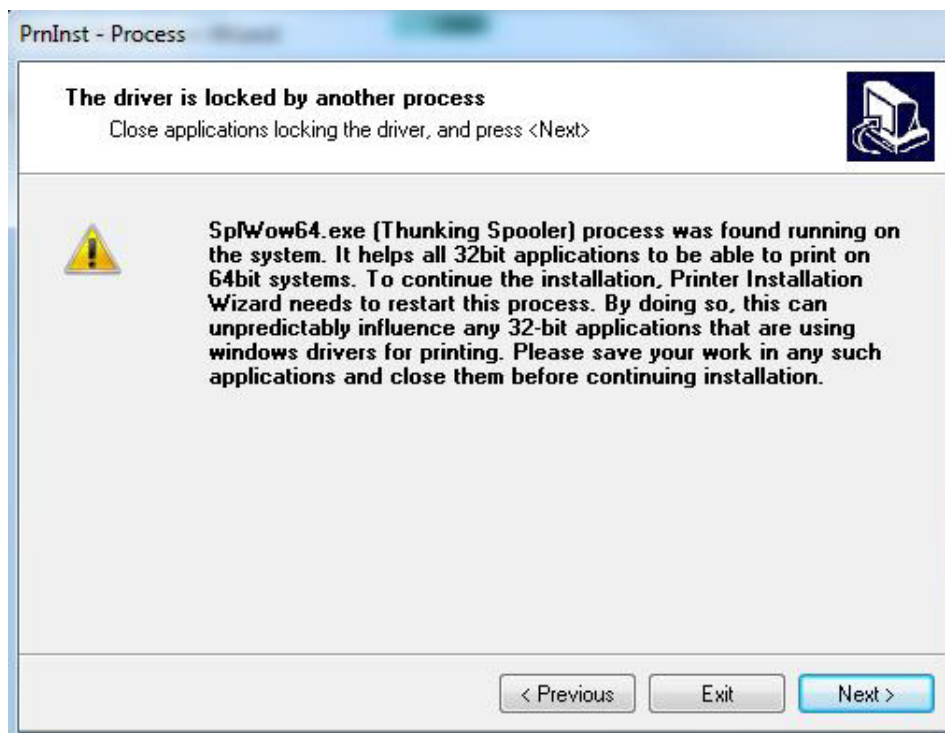


These two options are available:

- **Manual mode** – Delete current print jobs manually. To check if the queue is empty and to continue with the driver update, click **Refresh**.
- **Automatic mode** – PrnInst deletes all print jobs and continues with the installation.

To verify that the printer driver has been updated correctly, check the driver version in the **About** tab after the update. If the old version is shown, reboot Windows to finish the update process.

On a 64-bit Windows operating system, there is a separate process named Splwow64.exe that allows 32-bit applications printing using the 64-bit printer drivers. During the driver installation, a warning message shows that Splwow64.exe has locked the printer driver. After clicking **Next**, PrnInst restarts the Splwow64.exe process to unlock the printer driver.



# 5

## Import and Export Driver Settings Using Command Line Utility

To speed up the process of importing and exporting and be able to control if not in the driver's user interface, you can use the command line utility. You can run it from the command (batch) files to automate the import and export process.

The utility ImportExportTool.exe can be found in the Tools folder of your SATO printer driver installation.

The syntax to use the command line utility is as follows:

ImportExportTool.exe <Printer\_name> <File\_name> <import|export>

All parameters are mandatory.

- **Printer\_name:** Specifies the name of the printer driver as is displayed in Devices and Printers. Make sure to enclose the name in double quotes, if it contains spaces.
- **File\_name:** Specifies the name of the file that will either store the exported settings, or will be used as source of settings to be imported.
- **Import|export:** Specifies the command the utility will execute. Select **Export** to extract driver settings and save them to the file. Select **Import** to read driver settings from the file and apply them to the driver.

**This page is intentionally left blank.**

# 6

## Troubleshooting

### 6.1 Locked Printer Driver

During the installation, PmInst checks for applications that could lock the printer driver files. If detected, such applications will be shown.

#### **WARNING**

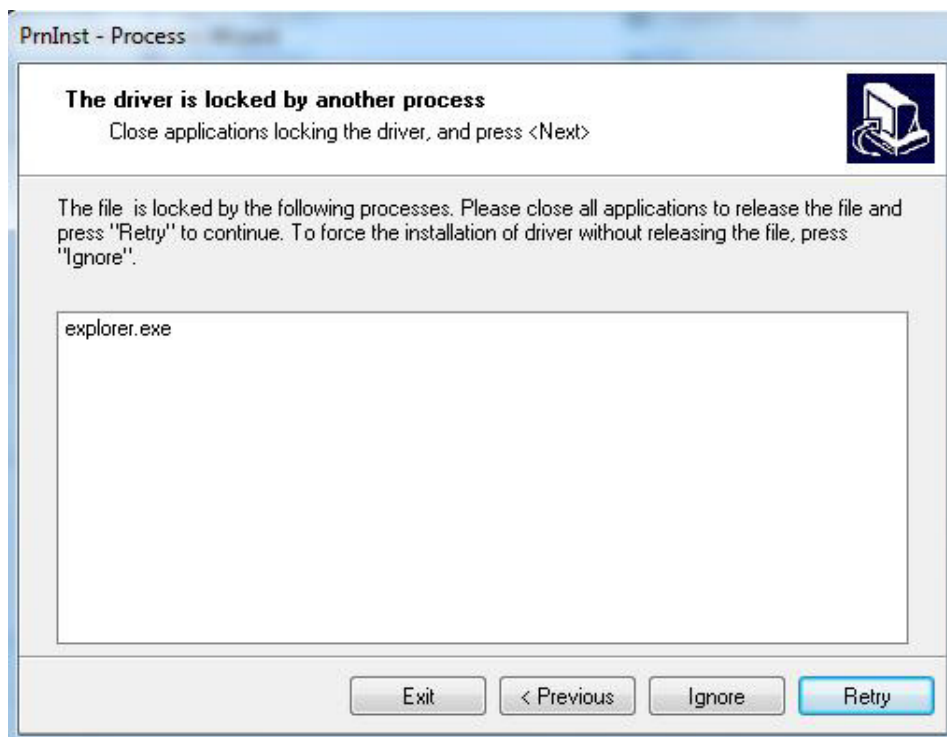
Locked drivers cannot be replaced.

With locked drivers present, the following options are available:

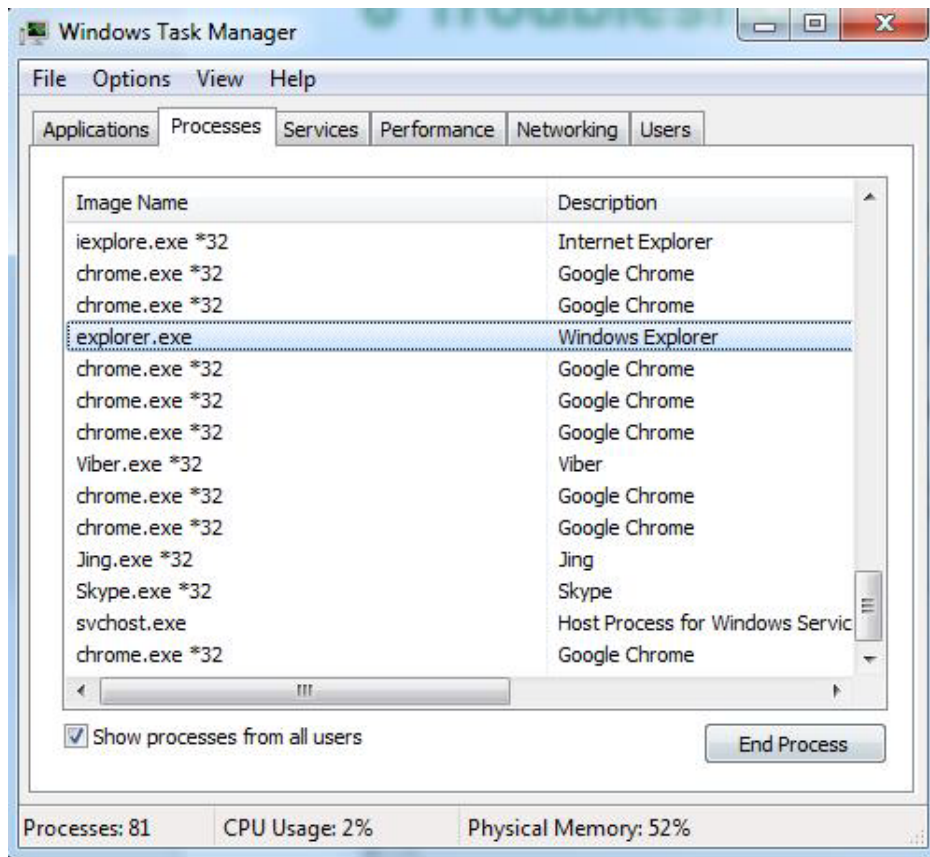
- Close the applications that are locking the printer driver.
- Stop the installation and restart the computer. After restarting, repeat the installation procedure.
- If closing the application window has no effect, use **Task Manager** to end the tasks. Refer to the examples below.
- Continue with the installation. New files are copied – installation is complete after restarting the computer.

#### Example 1: Windows Explorer Locking a Driver

If the printer properties have been checked in **Devices and Printers**, Windows Explorer locks the printer driver. Even after closing the **Devices and Printers**, Windows Explorer still locks the driver.



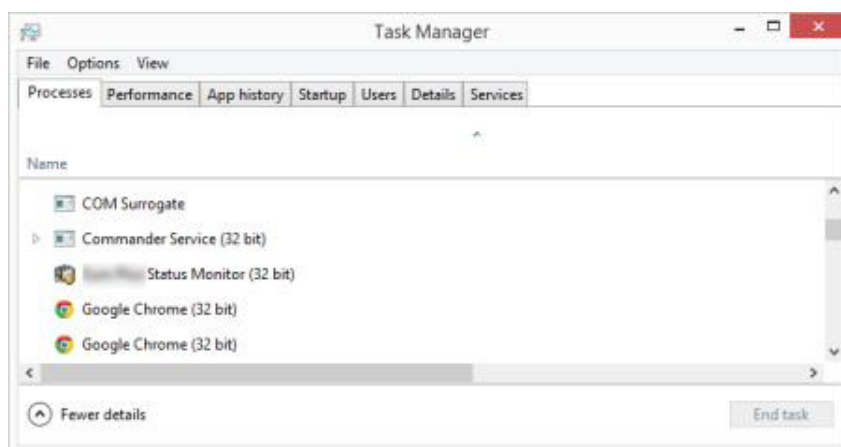
In such case, restart **Windows Explorer** process in **Task Manager -> Processes** tab. To restart the process, right-click **Windows Explorer** process and select **Restart**.



### Example 2: Status Monitor Locking a Driver

In certain cases, Status Monitor application locks the printer driver and makes uninstalling a driver impossible.

To stop the Status Monitor, open the **Task Manager** and search for the **Status Monitor** in **Processes** tab. Right-click Status monitor and select **End task**.



## 6.2 Possible Printer Driver Update Issues

The driver installer may try to update an already installed printer driver. There are several possible issues that prevent the driver update. The most common two causes are:

- Printer driver is locked. An application has locked it. This prevents the new driver from being installed. The driver files are copied, but unused until the operating system reboot.
- There are print jobs waiting to be printed. You must make sure that there are no jobs in queue. You must either print or delete jobs from Windows Spooler.

In most cases you will have to restart the computer to complete the printer driver installation. We recommend using PrnInst installation utility. The benefits are:

- **PrnInst** informs about possible issues.
- **PrnInst** helps resolving problems, which arise during the driver update.

To verify that the printer driver is updated correctly, verify the driver version in the **About** tab after the update. If the old version is still shown, reboot Windows to finish the update process.

**This page is intentionally left blank.**

# 7

## Appendix: Command Line Parameters for PrnInst

Use the command line parameters to install the printer drivers without interacting with the PrnInst GUI. Control PrnInst with command scripts as defined in this section.

---

### 7.1 INSTPRN – Printer Driver Installation

Use this parameter to install a printer driver. Specify the printer name and the port that the driver should use. The specified printer name must match the actual name of the printer. To find out the correct name of the printer, refer to the <printer\_brand>.INF file. It contains the list of all available printer names. Search for the .INF file in the folder, where you have stored the printer driver installation files.

#### Syntax

```
/INSTPRN=xxxxxxxxx#yyyyy[#wwwww]
```

xxxxx - full printer driver name

yyyyy - port name

wwwww – printer destination name - optional

#### Sample

Use the /DIR parameter with the /INSTPRN parameter to define the printer driver location.

---

#### Note

INSTPRN must be the last specified parameter in the command line.

---

---

### 7.2 INSTMULTPRN – Installation of Multiple Printers

Use this parameter to simultaneously install drivers for multiple printers. Specify the printer name and port that the driver should use. Printer name must match the actual name of the printer.

To find out the correct name of the printer, refer to the <printer\_brand>.INF file. It contains the list of all available printer names. Search for the .INF file in the folder, where you have stored the printer driver installation files.

### Syntax

/INSTMULTPRN=xxxxx

xxxxx - full file name and path of Printer Driver Installation List file

Syntax of Printer Driver Installation List file structure:

xxxxxxxxxxxxx#yyyyyyyyyyy#zzzzzzzzzz[#wwwwwwwww]

xxxxxxxxxxxxx - full path of start folder for "reading of .INF files"

yyyyyyyyyyy - full printer driver name

zzzzzzzzzz - port name

wwwwwwwww - printer destination name - optional

### Sample

PrnInst.exe /INSTMULTPRN=C:\tmp\PrinterList.tmp

For example, PrinterList.tmp file contains the following lines.

C:\Drivers\PRINTER1#Printer1#LPT1:

C:\Drivers\PRINTER2#Printer2#LPT2:

C:\Drivers\PRINTER3#Printer3#LPT3:

Three printer drivers are installed in this sample – Printer1 (linked to LPT1 port), Printer2 (linked to LPT2 port) and Printer3 (linked to LPT3 port).

---

## 7.3 LANG – Setting the PrnInst Language

Use this parameter to define the language used in the Printer Installation Wizard. The application always uses the default Windows operating system language. Default language is defined in **Control Panel -> Regional and Language Options**.

Use this parameter to specify other languages for the Printer Installation Wizard.

---

### Note

If you omit this parameter, the default language is used.

---

### Syntax

/LANG=xxx

xxx - language ID

Language	Language ID
Chinese – Simplified	SCH
Chinese – Traditional	CHI
Croatian	CRO
Danish	DAN
Dutch	DUT
English	ENG
Finnish	FIN
French	FRA
German	GER
Greek	GRE
Hebrew	HEB
Hungarian	HUN
Italian	ITA
Japanese	JAP
Korean	KOR
Lithuanian	LIT
Polish	POL
Portuguese	POR
Russian	RUS
Slovak	SVK
Slovenian	SLO
Spanish	ESP
Swedish	SWE
Thai	TAI
Ukrainian	UKR

### Sample

PrnInst.exe /LANG=GER

---

## 7.4 UNINSTALL – Uninstall Printer

Use this parameter to run the PrnInst in the uninstall mode. You will see a list of installed printer drivers. Select one or more drivers to remove.

### Syntax

/UNINSTALL

### Sample

PrnInst.exe /UNINSTALL

---

## 7.5 UNINSTALLPRN – Uninstall specific Printer

Use this parameter to uninstall a specific printer driver from the system.

---

### Note

Provide the exact printer name (as installed). We recommend to copy the printer name from **Control Panel -> Printers & Faxes**.

---

### Syntax

/UNINSTALLPRN=xxxxxx

xxxxxx – the exact printer name you wish to uninstall

### Sample

PrnInst.exe "/UNINSTALLPRN=SATO-Printer"

---

## 7.6 UNINSTALLALL – Uninstall all Printers

Use this parameter to uninstall all printer drivers from the Windows system.



### WARNING

This action erases the entire range of installed printer drivers from the system.

---

### Syntax

/UNINSTALLALL

### Sample

PrnInst.exe /UNINSTALLALL

## 7.7 NOLICENCE – No License Display

Use this parameter to start the application in a mode where no printer driver license and warranty information are shown during the installation.

### Syntax

/NOLICENCE

### Sample

PrnInst.exe /NOLICENCE

## 7.8 NOCERT – Do not force Driver Certification when installing a Driver

Use this parameter to prevent the PrnInst from using the certification installation if the driver has not been digitally signed. Even if the driver has been certified, an installation for normal non-certified driver will be used.

### Syntax

/NOCERT

### Sample

PrnInst.exe /NOCERT

## 7.9 DIR – Change Start Browsing Path

Use this parameter to specify the location of the drivers. The application will use this path to browse for the printer drivers. The default location is the folder with subfolders from where the application is started.

---

### Note

DIR must always be the first parameter in the command line.

---

### Syntax

/DIR=xxxxx

xxxxx - full path to start searching for .INF files

### Sample

PrnInst.exe /DIR=C:\Drivers\

## 7.10 PREINSTALL – Preinstall Driver Package

Use this parameter to preinstall the printer driver on the system. Windows will automatically find the driver needed when the user connects the printer.

### Syntax

/PREINSTALL=xxxxx

xxxxx - full path pointing to the .inf file

### Sample

PrnInst.exe /PREINSTALL=C:\Drivers\SAMPLE\_DRIVER\SAMPLE\_DRIVER.inf

## 7.11 UNINSTALLPACKAGE – Uninstall Driver Package

Use this parameter to uninstall the printer driver from the system. Windows cannot automatically find the driver of the printer, because it was removed from Windows Driver Storage.

### Syntax

/UNINSTALLPACKAGE=xxxxx

xxxxx - full path pointing to the .inf file

### Sample

PrnInst.exe /UNINSTALLPACKAGE=C:\Drivers\SATO\SATO-printer.inf

## 7.12 INSTALLPORTMON – Silent Installation of Port Monitor

Use this parameter to silently install a port monitor from the printer driver distribution. When using this command, do not use any other commands from the command line list. Note that this installation does not install the printer driver, just the Port Monitor.

### Syntax

```
/INSTALLPORTMON /name=aaaaa [/type=bbbbbb] [/monitor=cccc] [/inf=dddd] []
```

### Network port type

```
/ip=eeee /port=fffff]
```

### Serial port type

```
/port=ggggg [/baudRate=hhhhh] [/dataBits=iiii] [/parity=jjjj]
```

```
[/stopBits=kkkkk] [/flowControl=lllll]
```

### Parallel port type

```
/port=mmmmm [/reception=nnnnn] [/receptionInterval=ooooo]
```

```
[/transmission=ppppp]
```

### Specific port types

```
[/download=rrrrr] [/printingTimeout=qqqqq] [/downloadTimeout=sssss]
```

aaaaa – port name that will be shown in the port list

bbbbbb – type of port <LAN, LPT, COM>. Parameter is omissible, depending on the Port Monitor.

cccc – name of the Port Monitor being installed. Port monitor name can be found in information installation (.inf) file. Omissible if there is only 1 port monitor.

dddd – folder location of the information installation file containing Port Monitor. Search for installation information files is subfolder recursive. Omissible if there is only one information file in Printer Installation Wizard folder (or subfolders).

### LAN Port

eeee – ip address of the printer on the network.

ffff – printer's network port number. Parameter is omissible, depending on the Port Monitor.

### COM Port

ggggg – systems COM port number (example for COM3: value is 3)

hhhhh – baud rate of serial port in bits per second (valid values: 100, 300, 600, 1200, 2400, 4800, 9600, 14400, 19200, 38400, 57600, 115200, 128000, 256000)

iiii – data bits parameter for serial port. (Valid values: 5, 6, 7, 8)

jjjj – parity parameter for serial communication. (Valid values: none, odd, even, mark, space)

kkkk – stop bits parameter. (Valid values: 1, 1.5, 2)

llll – flow control parameter (Valid values: xonxoff, hardware, none)

### LPT Port

mmmm – systems LPT port number (example for LPT1: value is 1)

nnnn – reception timeout for LPT port when download function is enabled.  
Parameter is omissible and default value is 500 ms.

oooo – reception interval for LPT port when download function is enabled.  
Parameter is omissible and default value is 200 ms.

pppp – transmission for LPT port when download function is enabled.  
Parameter is omissible and default value is 3000 ms.

### Specific Ports

rrrr – enabled port specifics for downloading to printer.  
Parameter is omissible, default value is disabled. (Valid values: 0 - disabled, 1 - enabled)

qqqq – printing timeout value in milliseconds for port specific communication.  
Parameter is omissible and default value is 50 ms.

ssss – download timeout value in milliseconds for port specific communication.  
Parameter is omissible and default value is 7000 ms.

**Sample**

```
PrnInst.exe /INSTALLPORTMON "-monitor=Advanced Port Monitor" /name=MyNewPort /  
ip=192.168.1.5 /port=9100
```

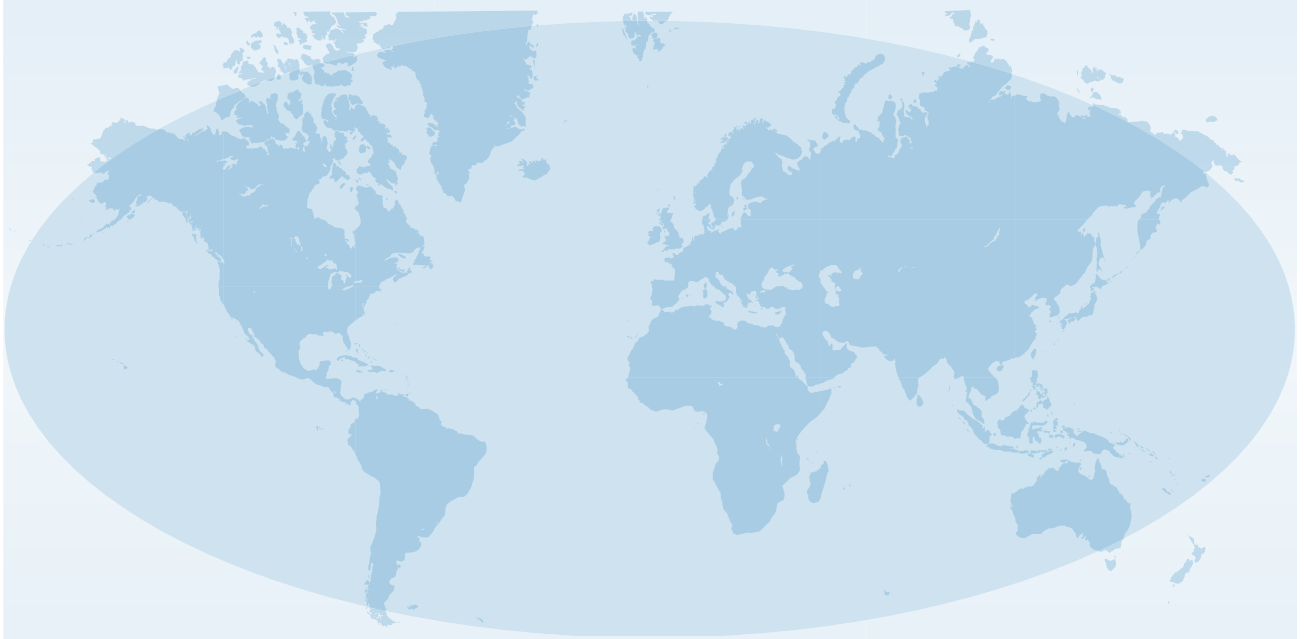
```
PrnInst.exe /INSTALLPORTMON -inf=c:\temp\driver\ "/monitor=Advanced Port Monitor" /  
name=NewLanPort /ip=192.100.021.005 /port=9100
```

```
PrnInst.exe /INSTALLPORTMON /inf=c:\temp\driver\ "/monitor=Specific Port Monitor" /ip=192.100.1.1 /  
type=LAN
```

```
PrnInst.exe /INSTALLPORTMON "/monitor=Specific Port Monitor" /name=MySerialPort /type=COM /  
port=3 /baudRate=128000 /dataBits=8 /Parity=Even /flowControl=none /StopBits=2
```

```
PrnInst.exe /INSTALLPORTMON "/monitor=Specific Port Monitor" /name=MySerialPort2 /type=COM /  
port=1 /baudRate=19200 /dataBits=8 /Parity=none /flowControl=Hardware /StopBits=1.5
```

```
PrnInst.exe /INSTALLPORTMON "/monitor=Specific Port Monitor" /name=MyParallelPort /type=LPT /  
port=3
```



Extensive contact information for worldwide  
SATO operations can be found on the Internet at  
**[www.satoworldwide.com](http://www.satoworldwide.com)**

**SATO**